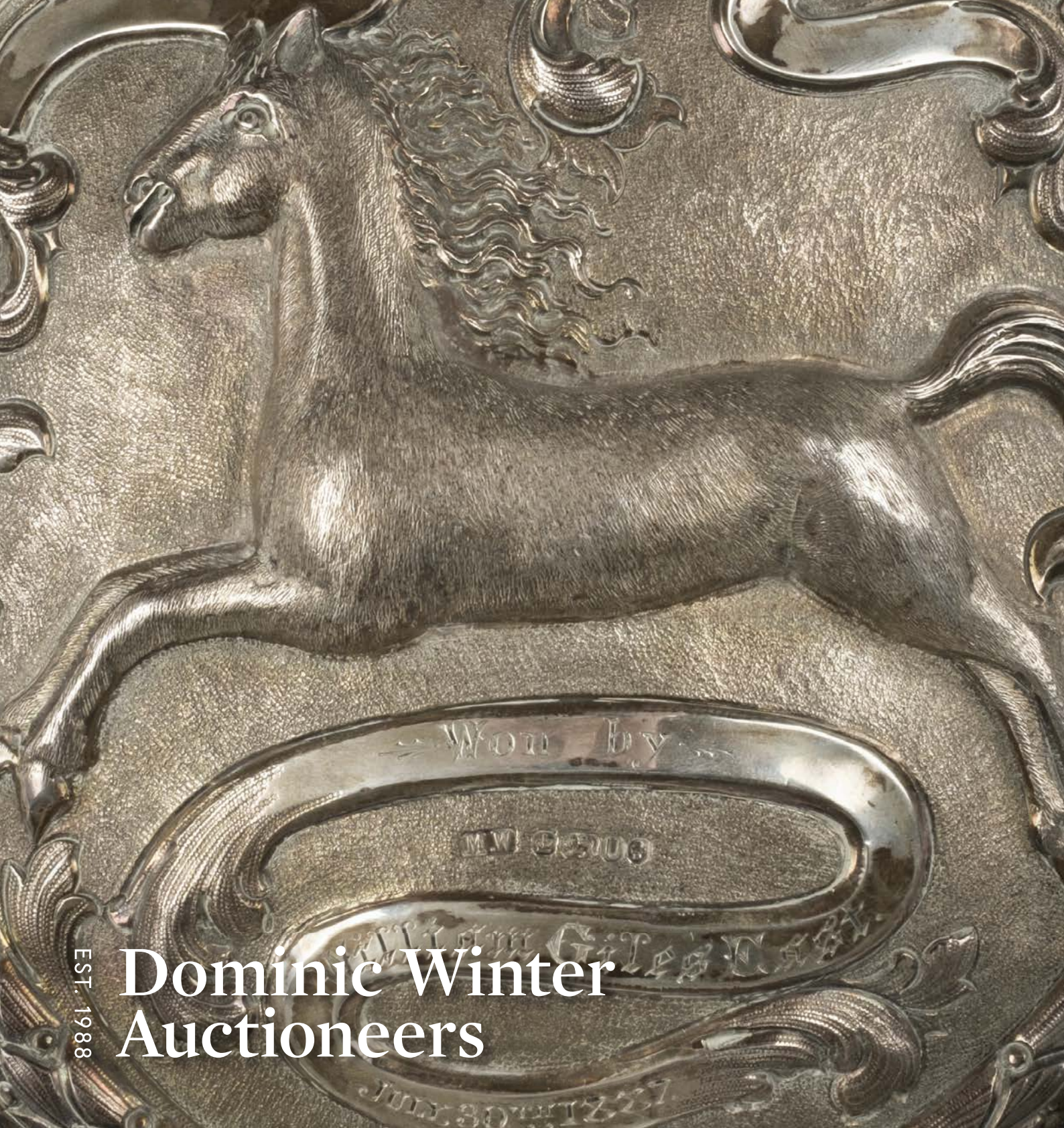


Antiques, Vintage Textiles & Taxidermy  
The Jack Webb Collection Part II  
A Private Collection of Motoring Memorabilia  
8 OCTOBER 2020



EST. 1988

Dominic Winter  
Auctioneers





青列鳥  
ケラツキ

チウシツ

翠雀

鳩  
ヒナリ

# **ANTIQUES & VINTAGE TEXTILES**

## **The Jack Webb Antiques Collection**

## **The David Wilson Taxidermy Collection**

## **Motoring Memorabilia: A Private Collection**

**8 October 2020 commencing at 10am**

**VIEWING BY APPOINTMENT FROM 30 SEPTEMBER ONWARDS (WEEKDAYS)**

**AUCTIONEERS**

Nathan Winter  
Henry Meadows

**EST. 1988**

# **Dominic Winter Auctioneers**

Mallard House, Broadway Lane, South Cerney,  
Cirencester, Gloucestershire, GL7 5UQ

T: +44 (0) 1285 860006

E: [info@dominicwinter.co.uk](mailto:info@dominicwinter.co.uk)

[www.dominicwinter.co.uk](http://www.dominicwinter.co.uk)



# IMPORTANT SALE INFORMATION: COVID-19

Please note that in accordance with current UK Government instructions regarding Covid-19, we are pleased to offer restricted public viewing of this sale by appointment only. Viewing by appointment from 30 September onwards (weekdays).

To request an appointment, please email [saleroom@dominicwinter.co.uk](mailto:saleroom@dominicwinter.co.uk) or call us on 01285 860006. At the time of writing, we do not expect to make public attendance available on either of the two sale days. This restriction will remain under review over the three weeks prior to sale.

All lots are fully illustrated on our website ([www.dominicwinter.co.uk](http://www.dominicwinter.co.uk)) and all our specialist staff are ready to provide detailed condition reports and additional images on request. We recommend that customers visit the online catalogue regularly as extra lot information and images will be added in the lead-up to the sale.

## CONDITION REPORTS

Condition reports now including video conferencing can be requested in the following ways:

T: +44 (0)1285 860006 | E: [info@dominicwinter.co.uk](mailto:info@dominicwinter.co.uk)

Via the relevant lot page on our website [www.dominicwinter.co.uk](http://www.dominicwinter.co.uk)

## ARTIST'S RESALE RIGHT LAW ("DROIT DE SUITE")

Lots marked with **AR** next to the lot number may be subject to Droit de Suite.

Droit de Suite is payable on the hammer price of any artwork sold in the lifetime of the artist, or within 70 years of the artist's death. The buyer agrees to pay Dominic Winter Auctioneers Ltd. an amount equal to the resale royalty and we will pay such amount to the artist's collecting agent. Resale royalty applies where the Hammer price is 1,000 Euros or more and the amount cannot be more than 12,500 Euros per lot.

The amount is calculated as follows:

Royalty	For the Portion of the Hammer Price (in Euros)
4.00%	up to 50,000
3.00%	between 50,000.01 and 200,000
1.00%	between 200,000.01 and 350,000
0.50%	between 350,000.01 and 500,000

Invoices will, as usual, be issued in Pounds Sterling. For the purposes of calculating the resale royalty the Pounds Sterling/Euro rate of exchange will be the European Central Bank reference rate on the day of the sale.

Please refer to the DACS website [www.dacs.org.uk](http://www.dacs.org.uk) and the Artists' Collecting Society website [www.artistscollectingsociety.org](http://www.artistscollectingsociety.org) for further details.

For payment arrangements please refer to information for buyers at rear of this catalogue.

We would kindly request that commission bids are submitted by 9.30am on the morning of sale.

## BIDDING

Customers may submit commission bids or request to bid by telephone in the following ways:

T: +44 (0)1285 860006. | E: [info@dominicwinter.co.uk](mailto:info@dominicwinter.co.uk)

Via the relevant lot page on our website [www.dominicwinter.co.uk](http://www.dominicwinter.co.uk)

Live online bidding is available on our website [www.dominicwinter.co.uk](http://www.dominicwinter.co.uk) (surcharge of 3% + vat): a live bidding button will appear 30 minutes before the sale commences. Bidding is also available at the-saleroom.com (surcharge of 4.95% + vat) and invaluable.com (surcharge of 3% + vat).

EST 1968  
**Dominic Winter**  
Auctioneers



**invaluable**

## POST-SALE

For payment information see our Information for Buyers page at the rear of this catalogue.

For details regarding storage, collection, and delivery please see our Information for Buyers page or contact our office for advice. Successful bidders will not incur storage fees while current government restrictions remain in place.

All lots are offered subject to the Conditions of Sale and Business printed at the back of this catalogue. For full terms and conditions of sale please see our website or contact the auction office. A buyer's premium of 20% of the hammer price is payable by the buyers of all lots, except those marked with an asterisk, in which case the buyer's premium is 24%.



# CONTENTS

## ANTIQUES

Objets D'Art	1-42
Antiquities	43-47
Oriental Works of Art	48-72
Tribal Art	73-83
Textiles & Fashion	84-110
Silver & Jewellery	111-142
Watches	143-147
Ceramics & Glass	148-199
Fossils & Minerals	200-217
Taxidermy	218-233
Clocks & Mechanical Music	234-243
Furniture	244-263
Motoring Collection	264-349

## SPECIALIST STAFF

### Antiques & Textiles

Henry Meadows BA Hons, MRICS  
Susanna Winters MA (History of Art)

### Paintings, Watercolours & Prints

Nathan Winter MA (History of Art)  
Colin Meays BA Hons (Conservation)

Tel: 01285 860006  
info@dominicwinter.co.uk



Nathan Winter



Henry Meadows



Colin Meays



Susanna Winters

Cover illustrations:

Front cover: lot 416

Back cover: lot 442





William Henry Jackson (1843-1942). Ute Indians at the Denver Exposition, [1882], 103 x 265mm

From an album of 135 mounted albumen print views of Yosemite, San Francisco, Monterey, Salt Lake City, Chicago, New York and Niagara Falls by Carleton E. Watkins, Isaiah Taber, William H. Jackson, Charles Roscoe Savage, George Barker & Theodore Gubelman, c. 1880s, images 32.5 x 20.5cm and smaller, contemporary half morocco, oblong folio (31 x 41cm)

Provenance: T.D. McKay, Pacific Coast Passenger Agent

£7,000-10,000: 18 November photography sale

## FORTHCOMING SALES

Wednesday 7 October	Printed Books, Maps & Documents Travel, Science & Engineering
Wednesday 11 November	Printed Books, Maps & Documents Scottish Topography from the David Wilson Library
Thursday 12 November	Military, Naval & Aviation History, Medals & Militaria Barnes Wallis Autographs, Artefacts & Ephemera The Winston Churchill Library of Major Alan Taylor-Smith (1928-2019)
Wednesday 18 November	Classic & Contemporary, Photography & Cameras China, Formosa & Japan in the 1860s The Jack Webb Collection of Military Cased Images & Photographs
Wednesday 16 December	Printed Books, Maps & Documents Literary & Musical Autographs from a Private Collection
Thursday 17 December	Modern Literature, Children's & Illustrated Books

*Entries are invited for the above sales: please contact one of our specialist staff for further advice*



## OBJETS D'ART

To commence at 10am



Lot 1



Lot 2

**1\* American Toleware.** A rare American toleware tray, probably early 19th century, painted with a scene depicting "Belisarius", launched October 1794, flying the American flag in Salem Bay, Massachusetts, the shaped tray with a green border painted with anchors, the base with remains of an old label inscribed Salem, 31 x 23cm

The scene derives from the original by Michel Felice Corne c.1800, showing the *Belisarius* as she was leaving Crowninshield's Wharf at Salem. The *Belisarius* was a large merchantman built by Enos Briggs at his shipyard at Stage Point, launched in 1794.

Salem was one of the most significant seaports in early American history, being a continuous settlement by Europeans from 1626 onwards.

(1) £500 - £800

**2\* Art Nouveau.** A WMF easel frame, c.1890, the large frame with a female in classical drapery with outstretched arm beckoning to a dove, against an arched frame with torch and foliate decoration, easel stand to the rear, numbered 11508 and stamped on the edge, 39.5cm high x 26.5cm wide

(1) £400 - £600



Lot 3

**3\* Battle of Trafalgar.** An ostrich egg, finely carved in shallow relief, circa 1805, the 4 sides depicting half-length busts of the Commanders of four famous British naval victories: 1) Admiral Lord Howe, Glorious First of June, 1 June 1794; 2) Admiral John Jervis, 1st Earl of St Vincent, Battle of Cape St Vincent, 14 February 1797; 3) Admiral Duncan, Battle of Camperdown, 11 October 1797; Admiral Lord Nelson, Battle of Trafalgar, 21 October 1805, each presented with backdrop drapery decorations and battle date in an oval rope medallion frame, the Commanders' names carved within the resulting lozenge frame around the central drill hole at the top of the egg and presented on flags draped from the trumpets blown by winged angels, the base showing Britannia within a hatched oval frame, and surrounded by additional naval and decorative motifs carved into the remaining blank areas, 15cm tall

Provenance: Collection of Jack Webb (1923-2019), London.

A museum-standard piece showcasing virtuoso ostrich egg carving. The artist has left the work unsigned. Jack Webb's notes suggest that it may have been made by a French Prisoner of War not long after the Battle of Trafalgar.

(1) £300 - £500





4\* **Blue John.** A collection of Derbyshire Blue John, comprising a Victorian white metal hat pin with a circular polished Blue John terminal, 22cm long, a heart shape pendant (damaged) plus another pendant (lacking mount), the remains of an egg (drilled), together with a collection of intaglio seals including Grecian and Roman heads, a Locomotive, initials etc, various materials including carnelian and agate, plus various semi-precious stone pieces including agate beads, malachite  
Provenance: Collection of Jack Webb (1923-2019), London.  
(small box) £200 - £300

5\* **Boat Tiller.** A hardwood boat tiller probably 18th century, the long wooden tiller carved with a griffin on one end and a grotesque on the other, 82cm long, origin unknown but probably European  
(1) £200 - £300

6\* **Boulle Work.** A 19th century French Boulle Work perfume box, inlaid the red tortoiseshell with brass inlay, the hinged lid enclosing three cut glass bottles with painted gilt decoration (one bottle missing), with four stoppers, 9cm high x 11.5cm wide x 9cm deep, with key  
(1) £100 - £150

7\* **After Jean-Antoine Houdon (1741-1828).** George Washington, a late 19th or early 20th century cast bronze portrait bust of George Washington, after the original portrait by Houdon, inscribed 'G. Washington' to base, 27cm (10.5 in)  
(1) £300 - £400



Lot 6



Lot 7



Lot 5



Lot 8



Lot 9

8\* **Theodore Roosevelt (1858-1919).** Bust of Theodore Roosevelt, 1921 [or later], a commemorative cast metal bust with dark brown patina of Theodore Roosevelt, facsimile signature of Roosevelt and his date of birth and death (1858-1919) to front, also marked to base (with copyright) 'L V A 1921', a few minor chips and surface marks, 20cm (8ins)

(1)

£300 - £400

9\* **Bronze Sculpture.** A modern bronze setter, modelled standing with a pheasant in its mouth, mounted on a black marble base, with label underneath 'Jansen International Statues', 44cm high x 62cm long

(1)

£100 - £200



Lot 10

10\* **Cameo.** A 19th century conch shell, carved with a cameo depicting Diana riding a chariot and muses and putto, 21cm high  
(1) £150 - £200



11\* **Candle Vases.** A pair of Regency bronze urns, each of classical form with domed cover, the bodies with gilt metal ram head masks each with ring through mouth, on a white marble and slate pedestal base applied with griffins and classical female head masks, some loss of marble and chips to slate, 22cm high  
Provenance: Collection of Jack Webb (1923-2019), London.

(2)

£150 - £200





12\* **Dice.** A large sailors scrimshaw ivory dice, c.1800, *engraved with a fouled anchor, star, club, heart, spade, and diamond, 22mm cube*  
The art of the scrimshander was popular throughout the 18 and 19th centuries, usually as a way of whiling away the monotony of life at sea.  
(1) £200 - £300



13\* **Dice.** A pair of George III period ivory dice, c.1800, *each carved with roundels denoting the number and infilled in black, 18mm cube, slight variation in colour*  
(2) £150 - £200



14\* **Fire Tools.** A set of George III cut steel fire tools, *comprising shovel, poker and tongs, the shovel 75cm long, together with a curved and pierced steel fire curb, 115cm long*  
Provenance: Collection of Jack Webb (1923-2019), London.  
(4) £200 - £300



Lot 14



15\* **French School (19th century).** A pair of bronze sculptures, each modelled as a recumbent goat, unsigned, mounted on a red-veined marble base 9cm high x 16cm wide  
Provenance: Collection of Jack Webb (1923-2019), London.  
(2) £200 - £300

16\* **Glass Domes.** A collection of Victorian glass domes, including a small glass dome on polished hardwood base raised on three ball supports, 22cm high, another housing a paper model of a house, on an ebonised base, 14cm high  
Provenance: Collection of Jack Webb (1923-2019), London.  
(6) £70 - £100



17\* **Grand Tour.** A pair of early 19th century alabaster obelisks, each of tapered form surmounted on a stepped wooden base, some loss notably along the edges, 27.5 and 28.5cm  
Provenance: Collection of Jack Webb (1923-2019), London.  
(2) £100 - £150



18\* **Grand Tour.** An early 19th century bronze sculpture, modelled as a lion attacking a snake within a naturalistic setting, unsigned, mounted on a rectangular marble base, 12.5cm high x 15cm wide  
Provenance: Collection of Jack Webb (1923-2019), London.  
(1) £200 - £300



19\* **Ice Hockey.** An art deco spelter figure modelled as a boy Ice Hockey player, with outstretched arm holding stick, on a shaped base, repainted recently in gold and silver and crudely dated 1937 1938, unmarked, 30cm high x 45cm long  
(1) £80 - £120

20\* **Incense Burner.** A gilded copper incense burner probably 17th century, with pierced and engraved decoration, lacking cover and damaged, 13cm high, together with a mixed collection of items including an 18th century silver snuff-box, of oval form with a tortoiseshell base and cover and overlaid with silver mythical scene, the tortoiseshell and silver loose and in poor condition, 8.5cm long, a Victorian desk weight with an ivory clenched hand on a circular green marble base, 11cm diameter and other items  
Provenance: Collection of Jack Webb (1923-2019), London.  
(5) £100 - £200





21\* **Jewellery Box.** A fine Regency parquetry box, of sarcophagus form, the box richly inlaid with rosewood, amboyna and other exotic specimens, the cover with gold foil cartouche and brass fruit and cornucopia handles, the hinged lid enclosing interior lined with marble paper, on four brass feet, 10cm high x 23cm wide x 18cm, with key  
(1)

£80 - £120



Lot 22

22\* **Lancashire Witch.** A large terracotta figure believed to be the Lancashire witch, the polychrome painted figure modelled fully standing wearing a cap and holding 4 piglets on a square base, some cracking, 85cm high

Provenance: Collection of Jack Webb (1923-2019), London.

Sold with a letter printed in Country Life, 16 November 1967:

'Sir, - I am enclosing a photograph of a terracotta figure, and I wonder if any of your readers can identify it. It is 2 ft . 9 in. high, and from its weight appears to be almost solid. It has probably been sculpted by hand and not moulded, and is painted (but not fired) in dull red, brown, grey and black. A Visitor who saw it claimed to recognise it as Mother Demdyke, head of the Lancashire witches and said that the five animals she is holding are her five familiars' J.V. Webb.

(1)

£200 - £300

23\* **Marbles.** An extensive collection of 20th century glass marbles, comprising hundreds, various sizes and colours, contained in an old brass coal bucket

(coal bucket)

£100 - £150

24\* **Mixed Collectables.** A Victorian silhouette on glass depicting a military officer, probably Continental, fruitwood frame, 13 x 12cm, together with a mixed assortment of items including a brass column candlestick dated 1797 engraved with a family crest, 22.5cm high and other items

Provenance: Collection of Jack Webb (1923-2019), London.

(a carton)

£100 - £200



25\* **Mourning brooch.** James William Cusack, Royal College of Surgeons, Ireland, the circular silver brooch with black enamel, a central star encompassing the initial C, within a pierced circular border interspersed with Celtic knots on a foliate and geometric engraved ground, the back engraved 'James W. Cusack Obit 25th Sept 1861', 50mm diameter

Provenance: Collection of Jack Webb (1923-2019), London.

James William Cusack (1788-1861) was the president of the Royal College of Surgeons in Ireland in 1827, 1847 and 1858. He was educated at Trinity College Dublin. After graduating he joined Dr Steevens Hospital in Dublin as resident surgeon and became a bold and dexterous operator. Cusack could use his scalpel without hesitation, and overnight became famous for his speedy first aid-treatment of a patient who was bleeding to death from a severed artery due to a gunshot wound. Cusack was also Surgeon-in-Ordinary to the Queen in Ireland.

(1)

£70 - £100



26\* **Newnham College.** A Cambridge University armorial shield c.1900, the electroplated shield bearing the crest of Newnham College, affixed to a stained oak board, with original A.W. Crisp & Co, Heraldic Artists label to verso, 39.5 x 32cm  
Newnham College for women is one of the 31 colleges of the University of Cambridge, established in 1871.  
(1) £200 - £300



28\* **Patch Box.** A George III period ivory patch box, of circular form, the cover finely inset with doves and arrows painted on glass on a mother of pearl ground within a "jewelled" and geometric border, tortoiseshell lining, some cracks to the ivory and chips to the tortoiseshell, 5cm diameter  
(1) £200 - £300



27\* **Obelisks.** A pair of modern marble obelisks, each made of pink marble and Verde Antigua, each piece has some loss and minor chips, 51cm high  
Provenance: Collection of Jack Webb (1923-2019), London.  
(2) £100 - £200



29\* **Pitt (William, the Younger, 1759-1806).** A 19th century white marble statue after John Flaxman, carved standing with a scroll in right hand against a veiled pedestal on a circular base, unsigned, the right arm has been broken and repaired, some old chips to the edge of the base, 52cm high  
Provenance: Collection of Jack Webb (1923-2019), London.  
John Flaxman (1755-1826) executed a statue of William Pitt the Younger for Glasgow Town Hall between 1808-1812.  
(1) £200 - £300





30\* **Polychrome Figure.** A Continental limewood figure of christ, probably 16th or 17th century, *carved holding the lamb, polychrome painted, approximately 124cm high*

(1)

£1,500 - £2,000



31\* **Powder Horn.** A fine North American scrimshaw powder horn c.1750, the cow horn finely engraved with maps and rivers and showing a figure of a couple titled 'Hugh Thompson & M:ss[sic] Hamilton', the woman writing with a quill and the man holding his hat, the whole piece profusely engraved with settlements, native American Indians, a cobbler and shoes, windmills, a king and queen, the king passing the queen a shoe, snakes, lions, zoomorphic creatures, the horn with a wooden cover, 36cm long (14ins), presented on a modern stand for display  
Provenance: Collection of Jack Webb (1923-2019), London.

(1)

£3,000 - £5,000





**32\* Rock crystal.** An Austrian rock crystal tazza probably c.1700, the three lobed bowl finely engraved with grape and vine decoration on a bulbous stem with brass collar on a trefoil base similarly engraved with a dragonfly, the bowl with extensive damage, cracked and repaired, 11.5cm high x 12.5cm across  
Provenance: Collection of Jack Webb (1923-2019), London.

(1)

£200 - £300



**33\* Rowing.** A silver Doggett badge and medal belonging to William Giles East, King's Bargemaster and Winner of Doggett's Coat Badge, comprising a large Victorian silver arm badge by Mappin & Webb, Sheffield 1887, the oval badge with the White Horse of Hanover beneath a banner inscribed 'Liberty', inscribed beneath the horse 'Won by William Giles East July 30th 1887', with four rings to the back, 20 x 17cm, together with a large Rowing medal with central oval plaque surrounded by laurel leaves on one side and oak leaves on the other, crossed sculls behind, two enamelled shields at the top surmounted by 'Champion', with a blue enamelled scroll at the bottom inscribed 'Tyne 1891', the centre engraved 'Presented to W.G. East Champion Sculler of England by the Proprietors of the Sportsman London, Nov 30th 1891' 9 x 6cm, in a fitted leather box, plus an extensive collection of research including an original monochrome photograph of the recipient  
Provenance: Collection of Jack Webb (1923-2019), London.

The medal included in this lot was purchased by Jack Webb at DNW on 15 September 2004 (Pat Grierson's Medal Collection, lot 395)

**William Giles "Bill" East (1866-1932)** was born in Lambeth, the son of William East who was a boat builder and in later years had a boathouse on the Thames in Putney. William "Bill" junior spent his whole life on or by the Thames, and became a waterman's apprentice in 1882, the year he won the Putney Badge. In 1887, Bill won the Doggett's Coat and Badge Race, and in 1891, the English Sculling Championship. However, he never defended this title. Seven years later, in 1898, he was appointed a waterman to the Queen. He retired from professional sculling around 1903/04 and in June 1906, he became the King's Bargemaster. He also stroked in the winning Champion Fours in the National Regattas of 1890 and 1891, and also the Champion Pairs. Bill was a very popular person on the Thames and was early on connected to Cambridge University Boat Club, to train and coach the crews. He published the 'how-to' book *Rowing and Sculling* in 1904. In later life, Bill became a publican and ran the Prince's Head hotel and the Pigeon Hotel at Richmond.

#### The Doggett Coat and Badge

The race is the oldest rowing race in the world. Up to six apprentice watermen of the Thames compete for this prestigious honour, which has been held annually since 1715. The 4 miles 5 furlongs (7.44km) race is rowed upstream from London Bridge to Cadogan Pier, Chelsea, passing under a total of 11 bridges.

(2)

£700 - £1,000



Lot 33



34\* **Spurs.** A pair of 18th century Hispanic spurs probably South American or Spanish, *steel and silver overlay, engraved with flowers and large spiked wheel, 16cm long*  
(2) £200 - £300



Lot 37



Lot 35



Lot 36

35\* **Table Lamp.** A Continental art nouveau table lamp c.1890, *the domed copper shade with a hammered finish and inset with opalescent glass bosses moulded in a manner to represent boulders with 12 glass drops, the brass base formed as 3 trees each with stylised flowers heads, 45cm high*

Provenance: Collection of Jack Webb (1923-2019), London.

(1) £200 - £300

36\* **Table Lamp.** An art nouveau bronze table lamp c.1890, *the base cast with stylised fish, with shell lamp shade, 46cm high*

Provenance: Collection of Jack Webb (1923-2019), London.

(1) £200 - £300

37\* **Tea Caddy.** A 19th century brass inlaid tea caddy, of rectangular form with brass inlay, *the hinged lid enclosing two compartments each with cover, on bun feet, 14.5cm high x 23cm wide x 12cm deep*

(1) £80 - £120

38\* **Tea Caddy.** A George III period mahogany tea caddy, of rectangular form with barbers pole inlay, *brass carrying handle and keyplate, the hinged lid enclosing marbled paper lined cover and three compartments each with cover, in refurbished condition, 16.5cm high x 27cm wide x 17cm deep*

(1) £100 - £150



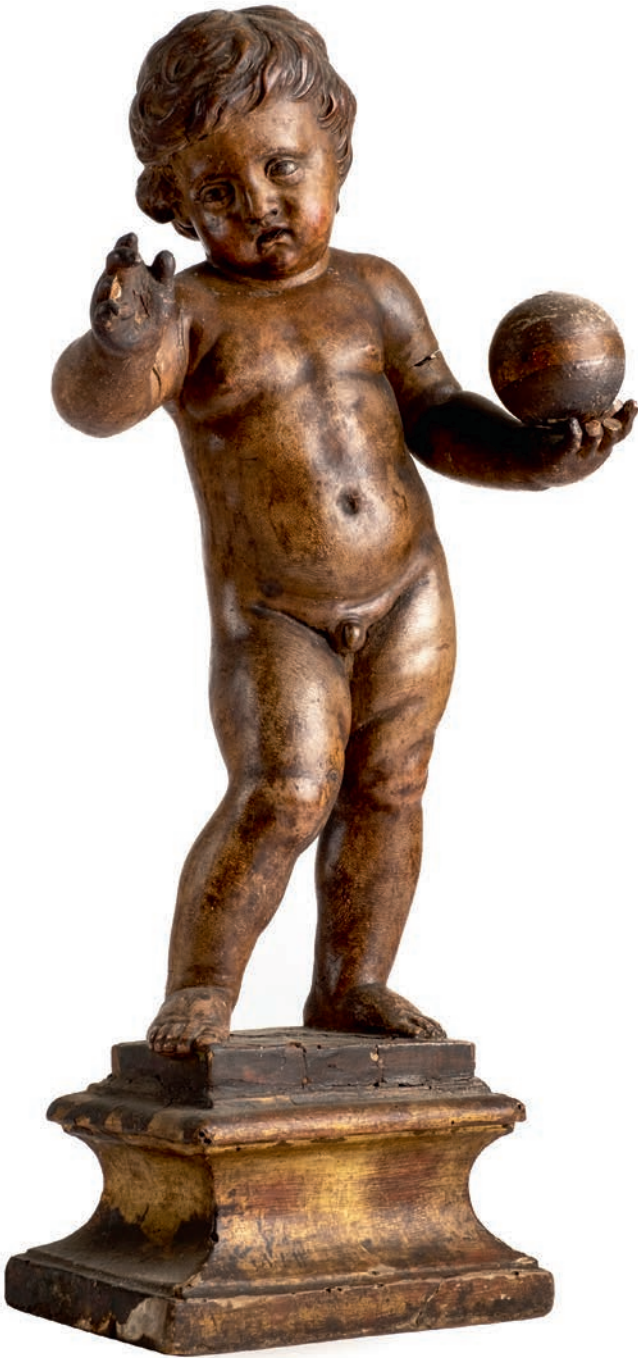
Lot 38



39\* **Tea Caddy.** A Victorian rosewood tea caddy, *applied with ivory and brass, the hinged lid enclosing marbled paper interior, in refurbished condition, 13cm high x 15cm wide x 12.5cm deep*

(1) £100 - £150





**40\* Manner of Andrea del Verrocchio (1435-1488).** The Infant Christ, mid-16th century, *polychrome and gilt gesso carved wood*, depicting a naked infant Christ holding an orb (probably the *globus cruciger*) in his left hand and offering benediction with his right hand, on integral plinth, some damage to fingers and general minor wear, overall height 58cm (22.75 in)

Provenance: Private Collection, Herefordshire, England.

(1)

£1,000 - £1,500



**41\* Walking Stick.** A 19th century whale bone walking stick, with marine ivory handle carved as whale cub with rosewood and ebony roundels, 84cm long

(1)

£400 - £600



**42\* Walking Stick.** A George III period whale bone walking stick, the handle with tortoiseshell and silver roundels, 92.5cm long

(1)

£300 - £500

## ANTIQUITIES



43\* **Ancient Egypt.** 26th Dynasty, a turquoise *Faience Shabti of the Overseer of the Royal Fleet Psamtek-Mery-Ptah, c.500 B.C., the large figure modelled wearing a tripartite wig, with well defined facial features and plaited beard, holding a mattock and hand hoe with square bag over the shoulder, 10 rows of horizontally incised text around the body separated by lines, back pillar and trapezoidal base, old chips, 19cm high, presented on a later wooden base*

Provenance: Collection of Jack Webb (1923-2019), London.

There is a letter included with the lot to Jack Webb from Dr Iorweth Stephen Edwards, Assistant Keeper, British Museum, dated 5 February 1947. Dr Edwards identifies the shabti as having an inscription declaring that it was made for a certain "Superintendent of the royal barges Psemthek-mery-Ptah" the remainder of the inscription is the standard Ushabti passage from the sixth chapter of the *Book of the Dead*.

(1)

£300 - £500



44\* **Ancient Egypt.** A large bronze shabti, *modelled standing wearing tripartite wig and arms straight by sides on an integral base, old repair to base, 26cm high*

Provenance: Collection of Jack Webb (1923-2019), London.

(1)

£300 - £500





Lot 45

45\* **Ancient Egypt.** An Egyptian glass two handled flask c. 500 BC, predominantly yellow with a green and white marbled finish, there is an old hairline crack running in a circular fashion on the body of the flask, however, considering the age of the piece this is in remarkable condition 18cm long

Provenance: Collection of Jack Webb (1923-2019), London.

(1)

£300 - £500

46\* **Mycenaean.** A Mycenaean pottery vase, probably c.1100BC, decorated with a net pattern and three handles, the base inscribed in pencil 'late Mycenaean c.1100 B.C.', old chips around the rim and foot 12cm high

Provenance: Collection of Jack Webb (1923-2019), London.

(1)

£200 - £300



47\* **Tiahuanaco.** A Tiahuanaco (Peru) pottery figure, probably c.1000AD, the male figure wearing a traditional dress with an elongated hat and outstretched arms, 14cm high

Provenance: Collection of Jack Webb (1923-2019), London.

(1)

£200 - £300



Lot 46

## ORIENTAL WORKS OF ART



48\* **Brush Pot.** A Chinese porcelain brush pot probably early to mid 19th century, modelled as a kneeling elder holding a vase with a further six vases in front of him, polychrome painted in the famille-rose palette, some damage notably to two of the vases, unmarked, 18cm high x 18.5cm wide  
(1) £150 - £200

49\* **Charger.** An unusually large Japanese porcelain charger, Meiji period (1868-1912), with two large panels decorated with figures on a boat and a pagoda by a bridge, on geometric ground with exotic birds and insects, polychrome painted with iron red and gold decoration, hairline crack and old plate hanger, 61.5cm diameter  
(1) £150 - £200



50\* **Charger.** A Japanese porcelain charger, Meiji period (1868-1912), decorated in the imari palette with exotic birds, pine trees and foliate decoration on an iron red and white ground heightened with blue and green, 41cm diameter, together with another Japanese blue and white porcelain charger similarly decorated, 37.5cm diameter  
(2) £100 - £200



51\* **Chargers.** A pair of Japanese chargers, Meiji period (1868-1912), each with a blue painted stylised flower to the centre overpainted in gold, within an iron red geometric border and four panels decorated with exotic birds and blossom trees, 30cm diameter  
(2) £100 - £150



52\* **Chinese Box.** A Chinese cinnabar lacquer box c.1900, the cover decorated with scholars and pagodas in a mountainous landscape, interior with black lacquer, and the base with a six-character mark, 5.5cm high x 14cm wide x 10cm deep  
(1) £200 - £300

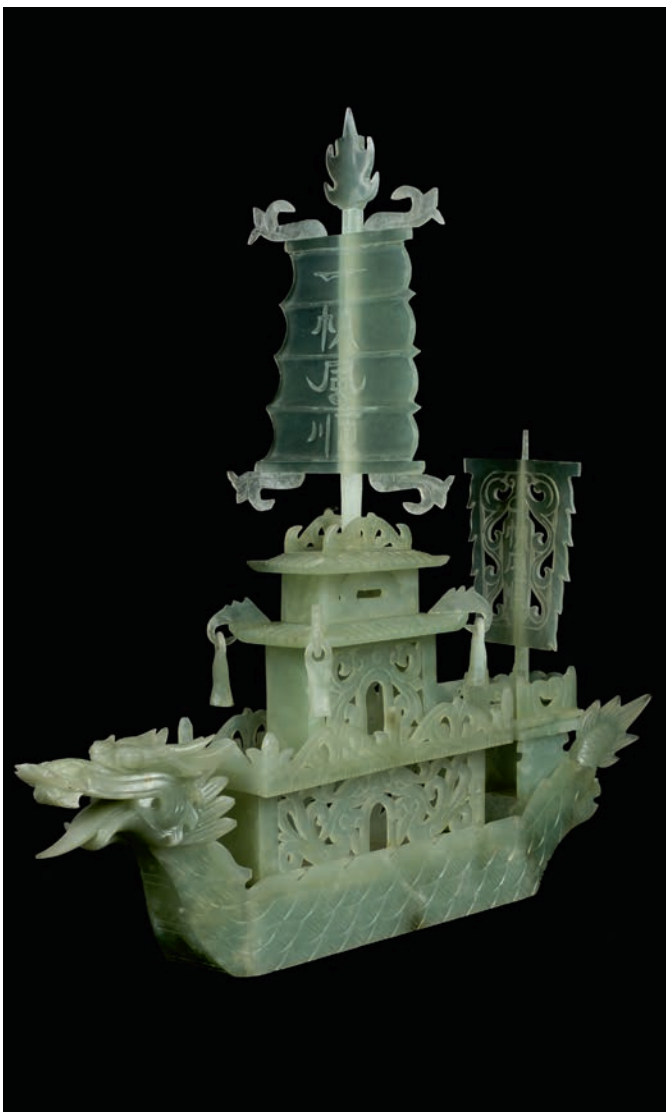




53\* **Chinese Carving.** A Chinese 20th century bowenite carving, elaborately carved as a flowering peach, 27cm high x 30cm wide  
(1) £150 - £200



54\* **Chinese Carving.** A Chinese 20th century bowenite carving, showing flowering peach, 16cm high x 18cm wide  
(1) £100 - £150



55\* **Chinese Carving.** A 20th century Chinese bowenite junk, carved in the form of a dragon with pagoda decking and two sails each with three characters, 45cm long  
(1) £150 - £200



Lot 56

**56\* Chinese Export.** An impressive 18th century Chinese armorial part tea service c.1782, comprising, teapot, 12 coffee cups, milk jug and cover, 3 tea bowls, 5 saucers, slop bowl, tea canister, shaped dish and a footed bowl, all decorated with an armorial and famille-rose palette, several pieces with recent damage, the teapot 23cm high, with an original manuscript letter of provenance dated 2 October 1852

The accompanying manuscript letter dated 2 Octr 1852 reads:

'History of the China got from Bowley. The East India ship Gustavus was wrecked on the Goodwin Sands and Captn Bowbyes of the Revenue cutter got this sett of china presented to him for his valuable services in saving the officers & crew in 1782 and remained in the family until the death of the widow in 1851. Discription of the arms [:] A Dove Volant resting on a Bees Cape. That is industry promoted by peace, on the Dexter - is a Lady Supporter. In her right hand, the cape of Liberty on a rod. Sinister, Supporter, Scale of Justice in her left hand, and in her right hand - The Sword of Justice. The Shield contains a group of flowers. The arms of Industry, Peace, Liberty, Justice & Commerce - Suitable for any merchant.'

(27)

£1,000 - £1,500

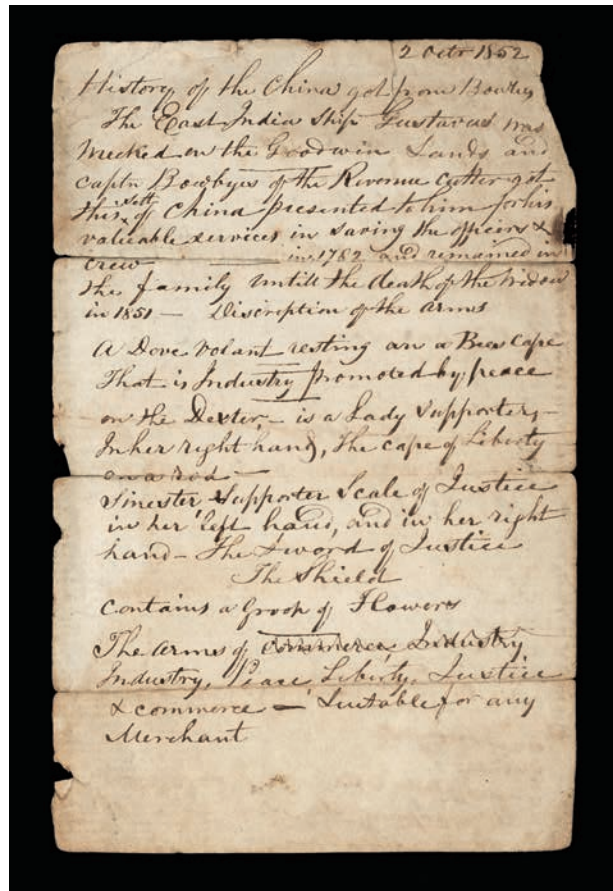
**57\* Chinese Panels.** A collection of Chinese hardwood carved panels, each carved in relief with figures, pagodas, landscapes and other traditional forms, painted red with gilt detail, various sizes for example 37 x 12.5cm and 24.5 x 13.5cm, plus a larger hardwood panel carved with pagodas, boats and landscapes, 93 x 44cm, three Japanese bronze sword guards (tsuba), one signed and other items (a carton)

£50 - £80

**58\* Chinese Pots.** A collection of archaic Chinese miniature pots, including a two handle celadon glaze pot, 8.5cm high, a provincial pot with blue painted foliate decoration on a mat glaze ground, 7.5cm high, two lidded pots and other examples

(9)

£700 - £1,000



Lot 56





Lot 58



59\* **Chinese.** A 19th century spinach green jade box and cover, of oval form carved with chilongs (damaged), 8cm long together with a late 18th century porcelain oversized mug with famille rose floral decoration and entwined handle, 16cm high, plus a large export mug decorated with butterflies, peaches and flowers, (chips and hairlines) 15cm high and one other (lacking handle)  
Provenance: Collection of Jack Webb (1923-2019), London.  
(4) £100 - £200



60\* **Mug.** An 18th century Chinese porcelain mug, the oversized mug decorated with scholars and children seated at a table with a figure by a window within a foliate landscape, polychrome painted with gilt painted panels, some wear and a chip to the rim, 12.5cm high x 10.5cm diameter, together with an 18th century Chinese porcelain dish in the famille rose palette, decorated with floral panels with green border, 27cm diameter  
(2) £150 - £200



61\* **Okimono.** A Japanese bronze monkey okimono, Meiji (1868-1912), formed as a large cluster of monkeys playing, with a silvered finish, 21cm long, on a modern hardwood stand  
(1) £400 - £600

62\* **Okimono.** A fine Japanese okimono modelled as a Japanese Chin, Meiji period (1868-1912), the silver figure with a characterful face and a fine coat of fur, wearing a bronze ribbon and with paw resting on a bronze drum inlaid with silver and gold, the base with a circular mark in gold, 9cm high x 12cm wide  
Provenance: Collection of Jack Webb (1923-2019), London.  
(1) £700 - £1,000

63\* **Oriental Ceramics.** A 19th century Chinese blue and white porcelain bowl, the interior decorated with a four claw dragon, the exterior similarly decorated with a four character mark to the base and an old label inscribed '53', chips to the rim and hairline cracks to the foot, 18cm diameter, together with a Chinese famille rose porcelain charger, decorated with four panels of figures, exotic birds and foliage, 31cm diameter, a Japanese lidded pot, two Japanese imari lobed bowls, five Japanese blue and white dishes and other items  
(a carton) £100 - £200



64\* **Screen.** A 19th century hardwood table screen probably zitan, replaced with mirrored glass within a lift-out frame inset with a silver foliate decorated border, some loss, 80.5 x 50cm  
Provenance: Collection of Jack Webb (1923-2019), London.  
(1) £300 - £500



Lot 62 (mark)



Lot 62





Lot 65



Lot 67

**65\* Table Lamps.** A pair of Chinese porcelain vases, late Qing converted to table lamps, *the blue and white vases of baluster form with two handles decorated with flowers, 44cm high, mounted on hardwood stands, converted to electric table lamps each with shade, overall height including shade 81cm*

(2)

£100 - £150

**66\* Tibetan.** A 19th century Tibetan casket, *made from coconut shell with silver mounts to depict a monster, the face finely detailed with ferocious teeth and ornamental headdress with a curled tail and four angled legs, the hinged lid enclosing a silver lining, 16cm long*

(1)

£500 - £800

**67\* Tomb Figure.** A Chinese clay tomb figure, believed to be Han / Tang period, *modelled as a man with arms by side, traces of pigment on a flared and hollowed base, 27cm high*

(1)

£200 - £300



Lot 66



Lot 68



Lot 72



Lot 70

68\* **Vase.** Chinese Famille Rose porcelain vase, probably 19th century, of baluster form with two pierced handles, decorated with warriors and a fortress within a mountainous landscape, old collection label to base, with heavy craquelure and ground down neck, 57cm high

(1)

£150 - £200

69\* **Vase.** A 20th century Chinese cloisonne gilt metal vase, of hexagonal form decorated with exotic birds and foliage on a gilt ground, blue enamel interior and base, 13cm high

(1)

£70 - £100

70\* **Vase.** A Chinese porcelain vase, Qianlong period (1736-1796), of baluster form with a mottled orange finish, old printed label to base 'Ch'ien-Lung 1736-1796', 14.5cm high together with a similar bottle vase, 20cm high

(2)

£100 - £200

71\* **Vase.** A Japanese Arita porcelain bottle vase, Meiji Period (1868-1912), with blue spiral decoration on a white ground, 27cm high

(1)

£50 - £80

72\* **Vase.** A Japanese porcelain vase, Meiji Period (1868-1912), of baluster form with polychrome enamel decoration depicting figures and flowers, overpainted six character mark to base, 40cm high

(1)

£100 - £150



## TRIBAL ART



**73\* African Carving.** A 20th century hardstone fertility figure, carved with hands holding body, the base signed 'Scale', 66cm high together with large African metal shield with a geometric design, 100 x 60cm  
(2) £150 - £200



**74\* Ashanti.** An Ashanti carved wood headrest, probably early to mid 20th century, with curved top above a central column surrounded by four supports, with pierced and geometric decoration on a rounded rectangular base, 25.5cm high x 42cm wide x 17.5cm deep  
(1) £150 - £200



Lot 73



**75\* Cameroon.** A Bamileki wooden water buffalo mask, carved in the traditional manner with long horns and elongated face, 49.5cm long  
Buffalos are respected in the Bamileki tribe for their strength and power.  
(1) £80 - £120



76\* **Congo.** A Kuba wooden mask, carved as a male with beaded headdress and reeded collar, 33cm high  
(1) £80 - £120



Lot 78



77\* **Congo.** A Luba wooden headrest, carved as two confronting figures linking arms, 19cm high x 19cm wide, together with another headrest carved as a male and female, 19cm high x 16cm wide  
(2) £100 - £150

78\* **Ghana.** A Fante wooden female doll, carved in the traditional style with abstract flat head and scarification marks, 39.5cm high mounted on a wooden base, overall height 51cm  
(1) £100 - £150

79\* **Ivory Coast.** A Baule wooden figure, carved as a seated male with elongated face, long beard and scarification marks on an integral base, 40cm high  
(1) £100 - £150



Lot 79





80\* **Kashmiri.** An Indian Kashmiri table, *beautifully worked in the traditional style, the rectangular top above four outsplayed supports, 31cm high x 38cm wide x 29.5cm deep*  
(1) £80 - £120



82\* **Nigeria.** An Ibeji wooden figure, *carved as a young male with ceremonial headdress and beads on an integral base, varnish finish, 24.5cm high*  
(1) £80 - £120



81\* **Kenya.** A collection of Kamba wooden figures, *including a warrior, carved holding a spear and club, 30.5cm high, another of a boy dressed in colonial wear, 16.5cm and others*  
(5) £150 - £200



83\* **South Africa.** A collection of Zulu artifacts, *including 5 North Nguni wooden pipes, the largest 30cm long, smallest 14cm, 2 beaded bags and other items, an old manuscript label inscribed Kaffir Mans Waist Ornament plus a gourd applied with nails, 12cm high*  
(12) £150 - £200



## TEXTILES & FASHION

84\* **Bags.** A Regency reticule, early 19th century, *hand-stitched draw-string bag, the lower portion of canvas embroidered with lattice pattern of crosses in pink, black, green, yellow, and purple wool, edged with twisted piping cord, lined with cream grosgrain silk which continues to form upper portion (one side dust-soiled, and the other side with a small hole), matching piping cord draw-string towards top held by 12 small bone rings*, 21.5 x 13.5cm (8.5 x 5.25ins), together with 6 19th or early 20th century beaded bags and purses, including a large bag with yellow metal mount set with green enamel (oyster silk lining perished), and a draw-string souvenir purse from Venice, with the words 'Ricordo Venezia' in beads, various sizes and condition

(7)

£100 - £150



Lot 84

85\* **Carpet.** An early 20th century Oriental heavy pile woollen carpet, with geometric decoration on a red ground within a predominantly brown multibanded border, approximately 239 x 166cm

(1)

£100 - £150



Lot 85

86\* **Carpet.** An early 20th century Oriental woollen carpet, with central medallion and geometric decoration on a red ground within multibanded border, approximately 198 x 142cm

(1)

£70 - £100



Lot 86





**87\* Christening gown.** A mid 18th century christening gown, hand-stitched silk satin infant's gown, front-opening bodice, 8 rows of fine pleating to front and back, elbow-length sleeves with double row of fringing, matching fringe to front of neckline, in two rows down front, and around bottom hem, lined with ivory silk, chest 44cm (17ins), waist 52cm (20.5ins), sleeves 17cm (6.5ins), length 80cm (31.5ins)

Rare early infant's gown, in unusually good condition and therefore perhaps never used, intended to be worn by a baby for a formal occasion, such as a christening. The early 18th century saw ornate bearing cloths and christening blankets give way to long gowns, with the move away from both full immersion and the custom of swaddling. The earliest christening gowns such as these were sumptuous affairs of rich silk satin, embellished with embroidery or fringing, quite different from the diaphanous white muslin gowns which followed in the Regency period. They were not without an element of practicality, however, as evidenced by the front opening and the adjustable straps which link the sleeves to the bodice, giving extra room if required.

For a similar fringed silk satin 18th century christening gown see the V&A, museum number T.21-1956.

(1)

£150 - £250

**88\* Court train.** A garment of late 18th century silk brocade, circa 1878, a large train of cream silk with broken lines of silvered thread, overlaid with woven large posies of pink and burgundy flowers incorporating gold thread, interspersed with small quatrefoils of gold thread, shaped and gathered at top and with 2 pairs of fastening hooks oversewn with thread (one missing), same fabric gathered at intervals to form edging, occasional small light marks, lined with gold organza, length 180cm (71ins), hem width 157.5cm (62ins), together with an irregular panel of the same silk, pieced from 3 widths, some light toning and dust-soiling, approximately 130 x 158cm (51 x 62ins), and 2 small matching fragments Said to have belonged to Lydia Diana Dashwood (died 1837), and later adapted to be worn as a court train in 1878.

(4)

£200 - £300



Lot 88



Lot 89





Lot 90

89\* **Embroidered picture.** English oval needlework of a lady in a pastoral landscape, circa 1790s, *hand-stitched on cream silk, depicting a seated young lady with a basket feeding sheep in a landscape, stitched in silks in shades of brown, cream, green, blue, and pink, using long and short stitch, stumpwork, and satin stitch, within an oval stitched frame, details of hands, face, and hair carefully delineated in pen & ink, generally faded, some loose threads, losses to silk ground, mostly to blank margins around oval, but also small loss to lower part of face (including nose), image size 34 x 26.5cm (13.25 x 10.5ins), tacked to stretcher, 38 x 33cm (15 x 13ins)*

(1)

£80 - £120



Lot 91

90\* **Embroidered picture.** The Samaritan Woman at the Well, English, circa 1790s, *hand-stitched on silk, depicting Jesus seated beside a well talking to a Samaritan woman, a pitcher by his side, a dwelling and palm trees in the background, stitched in wool and silks in shades of brown, cream, green, and pink, using long and short stitch, and stumpwork, details of faces, hands, feet, and hair carefully delineated in pen & ink, silk ground perishing, mostly affecting painted sky area, but just touching Christ's face (and with a split to his neck), and with splits visible on the woman's face and neck, 36 x 47cm (14.25 x 18.5ins), framed and glazed, inscribed in pencil on backboard in a later hand 'Bellapaise Abbey N. Cyprus'*

(1)

£100 - £150

91 **Embroidery pattern book.** Dessins pour coins de mouchoirs, pour manchettes, et pour cols [manuscript cover title], [France or Belgium], circa 1860, *a manuscript album in 3 parts of 50, 66 and 24 numbered thin paper leaves, comprising a total of 243 designs on rectos and versos of 140 leaves, leaves not numbered consecutively and some inverted but overall complete, each design being shown both in black India ink and in coloured inks of up to 12 colours, some occasional minor spotting, creasing and marginal fraying, title repaired at margins and with following leaf of designs partly adhered at inner margins, 4 numbered leaves with closed tears (65, 1, 11 & 7), original paper wrappers with ink title in block capitals to upper cover, browned, torn and repaired with modern paper backstrip, folio (31 x 21cm)*

(1)

£500 - £700



Lot 92

92 **Embroidery samples album.** Mustersam[m]lung für Pauline Häck den 4. Oktober 1849 [manuscript cover title], [Germany], circa 1850, *an album containing one baby bib and 303 bobbin and crotchet lace samples, a few specimens slightly browned, stitched onto rectos (and a few versos) of 31 leaves with green brushed paper to rectos, contemporary half calf over marbled boards with manuscript title label and broken cloth ties, rubbed, 4to (27.5 x 19cm)*

(1)

£400 - £600





**93\* Fabric.** A small collection of Spitalfields & other early fragments, mid 18th-early19th century, 12 pieces of brocade or damask, with various floral patterns, in a variety of colours and shapes, some taken from garments, a few incorporating metallic threads, 1 or 2 matching pieces, occasional holes or wear, largest (a pieced portion of early red silvered brocade) 114 x 63cm (45 x 25ins), smallest 19 x 18cm (7.5 x 7ins), plus 3 smaller pieces similar (15) £150 - £250



**94\* Hat pins.** A boxed set of enamel and mother of pearl hat pins, early 20th century, 4 pins and 4 interchangeable circular heads, latter with enamel centres of blue, pink, green, or gold, bordered by mother of pearl, pins 23cm (9ins) long, heads 20.7cm (1in) diameter, set within original cream velvet and silk-lined paper-covered box with hinged lid and clasps, rubbed, box 32cm (11.5ins) long, together with 6 other hat pins, comprising: a silver hat pin with blue enamel circular head by Arthur Johnson Smith, hallmarked 1910, length 18.5cm (7.25ins); another circular enamel hat pin, stamped 'sterling silver rims & backs' on verso; a pair of white metal spherical filigree hat pins; and 2 beaded hat pins (7) £100 - £150



**95\* Hat pins.** A silver hat pin, Welsh hat design, Charles Horner, 1911, hallmarked, on a steel pin, length 28.3cm (11ins), together with another of the same Welsh hat design, silver, hallmarked 1912, length 23cm (9ins), plus 8 other hat pins, comprising: 2 silver hat pins by Charles Horner, each with differing twisted art nouveau design, one hallmarked 1909, the other 1910; a pair of small art nouveau white metal hat pins by Charles Horner, stamped with maker's mark; 2 differing Pearce & Thompson art nouveau thistle hat pins, each silver and set with citrine, hallmarked 1909 and 1911; and two other hat pins, possibly by Charles Horner (10) £200 - £300

Each lot is subject to a Buyer's Premium of 20%  
(Lots marked \* 24% inclusive of VAT @ 20%)



**96\* Indian.** A silk tunic, late 19th/early 20th century, yellow silk long tunic, with printed floral pattern, edged with brocade, 8 (of 9) large mother of pearl buttons to front opening (one detached), and 2 small mother of pearl buttons to one cuff (missing to other cuff), deep side slits, lined with yellow and red printed cotton, underarms somewhat stained and perished, and some edge-fraying and repaired tears, length 126cm (50ins), chest 84cm (33ins), sleeves 71.5cm (28ins), together with another Indian tunic, muslin embroidered with flowers (some wear), plus 13 other items, including: a 1920s appliqué panel with a pharaoh figure and other Egyptian motifs, mounted on a wooden baton for hanging, 141.5 x 45.5cm (56 x 18ins); a bright pink Indian silk skirt length with hand-embroidered repeated pattern, and border to one edge incorporating mirror work, some areas of wear, 187 x 73cm (73.5 x 29ins); a 19th century belt incorporating a small hanging pocket, heavily hand-embroidered in tambour work using metallised threads on blue grosgrain, the pocket lace-edged in matching thread, lined with turquoise silk, 189 x 7cm (35 x 2.75ins), pocket 12 x 10.5cm (4.75 x 4.25ins), excluding trim; an irregular-shaped pieced fragment of 19th century Chinese cream silk, hand-embroidered with birds, butterflies and flower sprays, some wear and stains, longest edges 132 x 63.5cm (52 x 25ins); and 2 other small pieces of Chinese hand-embroidery on yellow silk (15) £200 - £300

97 No lot



98\* **Lace.** A Victorian wedding veil, probably Irish, cream tambour lace net veil, with scattered shamrocks and floral motifs, and flower spray border and cornerpieces, scattered small holes, 212 x 190cm (83.5 x 75ins), together with a portion from another veil, and a Victorian wide lace collar  
(3)

£80 - £120



Lot 99

99\* **Liberty.** A ladies' embroidered dress, 1930s, sleeveless long black dress of fine wool, lavishly embroidered all over with polychrome silks in tambour work to form floral decoration, notched collar, matching fabric belt tie (held on loops), and buttons (12 down front opening) all similarly embellished, printed Liberty label at nape, occasional unexceptionable tiny holes and neat repairs, lacking a closure (hook?) at waist, bust 99cm (39ins), waist 73.5cm (29ins), length 137cm (54ins), together with a circa 1880 gown apron front of black net embroidered all over with small black bugle bead stars, with waist decoration and ties of jet, lined with fine muslin, occasional small holes, mostly to lining, length 110.5cm (43.5ins), waist 32cm (12.5ins), plus 5 other garments, early 20th century, comprising: a 1920s hand-made long pale blue muslin tea dress with dropped waist and embroidered lattice inserts to bodice, short sleeves, and skirt; a royal blue satin opera cloak by Strohbach, size 38; 2 1920s red wool embroidered dressing gowns, both incorporating metallic thread embroidery, one with occasional loose threads, and a few small holes in seams, the other with much of threadwork loose, one sleeve marked and with 2 holes, and lacking the waist tie; and a green silk knee-length coat by Lord & Taylor, some edge-wear and small holes  
(7)

£150 - £250



100\* **Manuscript Genealogy.** The Family Chart of British Kings from the Norman Conquest to 1905, by F.A. Fairall, Aldershot, 1905, large cream glazed cotton chart, with calligraphic title at head and royal pedigree carefully delineated in pen & ink, accompanied by numerous portrait busts, heraldic motifs, medals and ensignias, crowns and coronets, ensigns, and country emblems, all in pen, ink, and watercolour, lower right corner inscribed 'Designed and Drawn by F.A. Fairall. 119 Grosvenor Road, Aldershot, 1905', toned and some fox spots, stained to left hand margin and with a 2" closed tear (not quite touching one of the portraits), edges frayed and creased, and with tack holes where previously mounted, 101.5 x 94cm (40 x 37ins)

A most unusual large-scale production, painstakingly delineated by someone who clearly had some time to spare; perhaps intended for instruction in the classroom or nursery.

(1)

£100 - £150





**101\* Mittens.** A pair of silk mittens, English, circa 1760-1780, a pair of long silk fingerless gloves, hand-stitched, cream silk taffeta lined with white kid, terminating at point over hand and with set-in thumb cut off at tip, serpentine open work band to underside of arm, edges and details neatly worked in herringbone stitch (lower edge of each mitt faggoted), some fading, soiling, and wear, length approximately 37cm (14.5ins), together with two brown labels inscribed in ink in an early-mid 20th century hand, indicating that the mittens were lent for exhibition by Mrs. de la Hey of North Cerney House near Cirencester

Rare early mittens. Very similar to two pairs of mittens in The Art Museums of Colonial Williamsburg (see object numbers 1985-216,1 and 1985-217,1). The stitching on these mitts is stretchy and therefore facilitates expansion when the gloves are taken on and off, thereby adding a practical as well as a decorative element.

(2)

£150 - £200



Lot 102

**102\* Needlework slips.** A collection of slips, English, early 18th century, 12 crewelwork slips, in plant-dyed wools, in shades of green, pink, brown, and cream, depicting various floral and foliate motifs, worked in long and short stitch, satin stitch, French knots, bullion stitch, and stem stitch, some wear and loss of stitching, each stitched to a herringbone weave fabric, and sometime later laid down on a thick cream fabric backing, largest approximately 32 x 32cm (12.5 x 12.5ins), smallest 6.5 x 9cm (2.5 x 3.5ins)

(12)

£200 - £300

103 No lot



**104\* Ottoman.** A Turkish towel, 19th century, fine cream linen, with wide floral polychrome and metal thread hand-embroidered border at each fringed end, occasional minor loose threads, a couple of small holes (not affecting embroidery), small tear to one corner just touching embroidery, 148.5 x 48cm (58.5 x 19ins), together with 6 other Ottoman Empire embroidered towels or similar, various sizes and condition

(7)

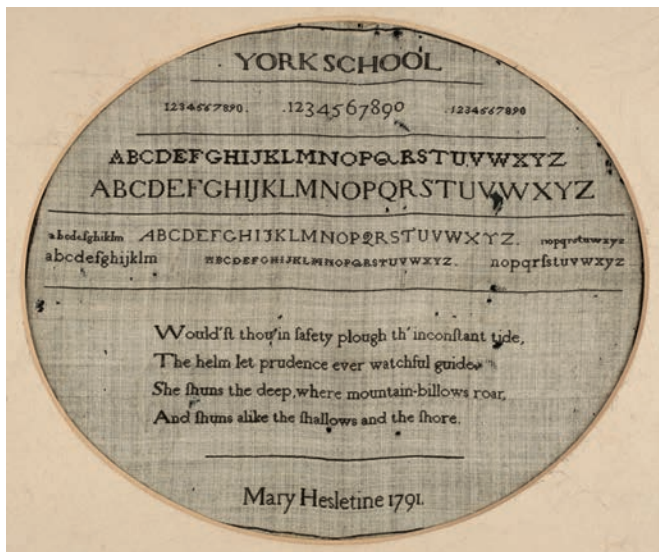
£200 - £300



**105\* Regency embroidery.** A collection of fabrics & pocket books, late 18th/early 19th century, 10 pieces of silk or satin, each embroidered with silks or ribbons, including: a hand-pieced portion of a skirt, cream satin, finely hand-worked in tambour stitch and ribbons with all-over pattern of flower and bow sprigs, a couple of small areas with marked-up pattern visible where unpicked, generally marked, some loose stitches, approximately 142.4 x 98cm (60 x 38.5ins); a hand-stitched cream silk fichu with fringed edging, 2 sides finely hand-worked with scrolling border of ribbons, flowers, and peacock feathers, in tambour stitch and ribbon embroidery, incorporating metal threads and tiny spangles, toned and spotted, fabric perishing in places, embroidered sides approximately 76cm (30ins); 3 small irregular fragments from a gown, cream satin, finely hand-worked in tambour stitch with floral sprays, peacock feathers, and bows and tassels, some holes and marks; and 4 ladies' pocket books, worn, each hand-embroidered, some incorporating metal threads and spangles, one with stitched initials and date of 1808

(14)

£200 - £300



Lot 106

**106\* Sampler.** A Quaker sampler by Mary Hesletine, York School, 1791, oval cross-stitch sampler, worked in black thread on fine linen, with 'York School' above various Arabic numerals and alphabets, with 4-line stanza below, and the maker's name and date to lower margin, all within a stitched oval border, faintly foxed and with scattered small holes, occasionally just touching embroidery, 25.3 x 30.3cm (10 x 12ins), oval mount, together with:

Sampler. A needlework sampler by Susette Judith Clement, 1843, cross-stitch sampler, worked in various colours on fine linen, with bands of letters and decoration above a 2 stanza poem 'God is Love' flanked by birds and lyres, with maker's name and date below between cornucopia motifs, linen toned, some small holes and minor losses, 34.7 x 24.3cm (13.75 x 9.5ins), framed and glazed, plus two other needlework pieces: an 18th century embroidered picture of a flower urn containing sprays of lilies, tulips, carnations, and roses, worked in silks in shades of pink, green, and blue, and the urn incorporating spangles and metal threads, on cream silk, latter perished with repairs, sometime later stitch-mounted into thick cream fabric, incorporating an over-lay of consolidating net to most of embroidery, 48 x 35.5cm (19 x 15ins); and an early 20th century wall sampler by Rosa de Clercq (born 1892), dated 1902-3, worked in red cross-stitch on 2 canvas panels, with various letters, numbers, and 'hemelsdaele', interspersed with panels of tucking/hemming, inserts of crocheted lace, an example of soutache embroidery, and a knitted sample within stem-stitch patterns, losses to embroidery, bordered and backed with yellow fabric, 104 x 32cm (41 x 12.5ins)

Rare early Quaker sampler. York School, or York Friends' Girls' School, to give it its full name, opened in 1785. Its founders were prominent Quakers, Esther and William Tuke, who wished to provide an education for the daughters of fellow Quakers. Fees were 14 guineas a year for 'instruction, board and washing'. The school continues today as an all-girls educational establishment, now known as The Mount School. The verse reads: 'Would'st thou in safety plough th' inconstant tide,/The helm let prudence ever watchful guide./She shuns the deep, where mountain-billows roar./And shuns alike the shallows and the shore.' It is the first part of a 12-line poem published in *Miscellanies, Moral and Instructive, in Prose and Verse*; collected from various authors, for the use of schools, and improvement of young persons of both sexes, compiled by American Quaker poet Milcah Martha Moore (1740-1829). It was first published in Philadelphia in 1787, and re-printed in London the same year.

Susette Judith Clement was born in Panfield, Essex, in 1828, and died in Brentwood in 1891. She married David Rist and they produced a son named William. The two verses are taken from Thomas Moore's hymn 'There's nothing bright, above, below,/From flowers that bloom to stars that glow ...'

(4)

£500 - £700



**107\* Slipper fronts.** A pair of 18th century slipper fronts, possibly Ottoman Empire, each with pressed and engraved steel mounts decorated with a vase of flowers, birds, and entwining foliate tendrils, one with a few breaks, hand-stitched onto a red felt cloth base, 12 x 14cm (4.75 x 5.5ins)

Provenance: Collection of Jack Webb (1923-2019), London.

A pair of rare and highly decorative slipper fronts, clearly once owned and worn by a person of status.

(2)

£200 - £300





108\* **Spitalfields.** A deconstructed gown of mid-late 18th century brocade, circa 1840s, comprising a hand-stitched bodice and skirt (and a matching small fragment) of figured cream silk, woven with large flower sprays, including roses, carnations, and lilies, in shades of pink, green, blue, and yellow, the lined bodice boned and fitted, and with short sleeves, the skirt opened out at side seam and comprising a number of joined pieces, stiffened on reverse with canvas, a few remnants of pink silk lining extant, some light soiling and wear, but colours bright, skirt dimensions: length 101.5cm (40ins), waist 82.5cm (32.5ins), hem 239cm (94ins)  
(3) £200 - £300



Lot 109

109\* **Toiles de Jouy.** A collection of fabrics, late 18th century and later, 14 pieces of Toiles de Jouy fabric, printed in raspberry on a white cotton or linen ground, various patterns showing classical figures, putti, a wedding party outside a village church, dogs, sheep, a cat, children at play, including 4 pieces of 'l'Amour et l'Amitié' ('Love and Friendship') and 5 hand-quilted pieces, a couple with braided trim, some portions pieced, a few faded, some marks and holes, largest (pieced) 167.5 x 42cm (66 x 16.5ins), smallest 30 x 18cm (12 x 7ins), together with 10 other small fragments of Toiles de Jouy fabric and similar, including one piece in blue titled 'Le Printemps' and 2 of hunting scenes in mustard (and a matching pin cushion), plus a fragment of early French Vichy fabric, some holes, 116 x 34cm (45.5 x 13ins)  
(26) £100 - £150



110\* **WWII Escape Map.** Scandinavia and the Baltic, circa 1940, ivory rayon printed on both sides in black and red with a map of Scandinavia, 'Top Half' to one side and 'Lower Half' to the other, former with heading 'International Boundaries, 1st April 1940, International Boundaries 1st Sept. 1939, Partition of Poland, Sept. 1939', a couple of small faint marks, hem becoming unstitched in a few places and slightly frayed, 48 x 58cm (19 x 22.75ins), together with: Derby Winners. Silk scarf, 1927, cream silk scarf printed with illustration of Call Boy ridden by Charlie Elliott, winner of the 1927 Derby, surrounded by the names of all the Derby winners from 1780-1927, all printed in black, with royal blue border, some faint fox spots and small holes, a little dust-soiled in 1 or 2 places, 91.5 x 84cm (36 x 33ins), together with 2 other scarves, including a silk scarf with colourful all-over design featuring flags of various countries of the world, the border incorporating 8 illustrations of galleons and other sailing ships printed in black, worn, 86 x 79cm (34 x 31ins)  
A Second World War escape map in very good condition. Such maps were produced by the Allies for use by airmen in the event of being shot down over enemy occupied territory; some were also smuggled into prisoner of war camps in Germany in order to aid escape.  
(4) £100 - £150

## SILVER & JEWELLERY



111\* **American Silver.** A silver milk jug by Richard & William Wilson, Philadelphia c.1815, of helmet shape form with organic decoration and engraved with initials and scroll handle on conforming pedestal foot, clear marks to the underside of the base, 19cm high, approximately 7oz

(1)

£150 - £200

112\* **American Silver.** A silver soup ladle by Thomas Underhill, New York c.1785, of plain form engraved with initials, stamped twice with makers initials 'T.U.', 35cm long, approximately 6oz

(1)

£150 - £200

113\* **American Silver.** An American silver fiddle pattern stuffing spoon by Robert Wilson, Philadelphia c.1810, engraved with initials, there is a cut in the silver where the bowl meets the stem, marked 'RW' but no other markings, 30cm long, approximately 3.5oz long

(1)

£100 - £150



Lot 113



Lot 112



Lot 113





114\* **Australian Silver.** An Australian silver ladle by Jacob Josephson, Sidney c.1820, of plain form engraved with a 'B', stamped with makers mark 'JJ' but no other markings, 32cm long, approximately 5oz and scarce  
(1)

£200 - £300



115\* **Creamer.** A George II silver creamer by Walter Brind, London 1759, of baluster form with scroll handle on three cabriole supports with pad feet, 10cm, approximately 3oz  
(1)

£70 - £100



116\* **Cup.** A George III silver cup by Andrew Foelberg, London 1802, formerly used as a christening cup, of cylindrical tapered form engraved with four dates each with initials 'Born 1799', 'Born 1831', 'Born 1879', '1912', engraved with wrigglework and scroll handle, gilded interior and nice clear marks, 8.2cm high, approximately 3.5oz  
(1)

£70 - £100



117\* **Fish Slice.** A Victorian silver fiddle pattern fish slice by Rettie & Son, Aberdeen 1851, engraved with initials and a finely pierced slice, 30cm long, approximately 4oz (1) £80 - £120



118\* **Forks.** A collection of silver table forks, including 3 George III fiddle pattern forks by Alexander Hendersom, Edinburgh 1812, a pair by Anne Robertson, Newcastle 1807, a pair by Richard Crossley, London 1799 and other forks, total weight approximately 37oz (15) £300 - £500



Lot 119

119\* **Forks.** A collection of silver table forks, including a George III fiddle pattern fork by Peter & William Bateman, London 1811, others by Samuel Hayne & Dudley Cater, London 1845, Henry Holland, London 1875, Richard Poulden, London 1821 and other forks, total weight approximately 37oz (15) £300 - £500



120\* **Forks.** A collection of silver table forks, including a set of 6 Victorian fiddle and shell pattern forks by Henry Hutton & Co, Sheffield 1890, a set of 4 Victorian forks by George William Adams, London 1848 and other forks, total weight approximately 36oz (14) £300 - £500



121\* **Forks.** A collection of table and dessert forks, including 3 George III table forks by George Smith & William Fearn, London 1790, a set of 4 Victorian dessert forks by George Maudsley Jackson & David Landsborough, London 1901 and other forks, total weight approximately 27oz (15) £200 - £300





**122\* Forks.** A collection of table and dessert forks, including a George III table fork by John Hampston & John Prince, York 1790, a table fork by John Walton, Newcastle 1818, a table fork by James Le Bas, Dublin 1838, an 18th century table fork with marks for the Hague, Holland, a set of 4 table forks by William Eley, London 1821 and other forks, total weight approximately 42oz

(25)

£400 - £600



**123\* Ladles.** A collection of silver ladles, including a Victorian fiddle pattern sifter spoon by Thomas Byne, Exeter 1842, a Victorian Scottish Elgin fiddle pattern ladle by Joseph Pozzi & Robert Stewart, a fiddle and shell pattern ladle by William Marshall, Edinburgh 1842 and other spoons, total weight approximately 11oz

(10)

£100 - £150



Lot 124



Lot 125

**124\* Meat Skewer.** A George III silver meat skewer by Smith & Fern, London 1789, of plain form with ring terminal, 30cm long, approximately 2.5oz

(1)

£80 - £120

**125\* Meat Skewer.** A George III silver meat skewer by William Sumner, London 1784, of plain form engraved with a coronet and with ring terminal, 33.4cm long, approximately 3oz

(1)

£100 - £150

**126\* Mixed Silver.** A collection of silver, including an 18th picture back mote spoon, a pair of coasters, Sheffield 1911, a large ladle, 8 napkin rings and other items, weighable silver approximately 34oz

(21)

£300 - £500

**127\* Mixed Silver.** A collection of silver, including dessert spoons, table forks, sifter spoons and other items, total weight approximately 41oz

(30)

£300 - £400

**128\* Mixed Silver.** A mixed collection of silver items, including glass inkwell with hinged silver lid on a silver navette shaped stand by James Deaking & Sons, Sheffield 1906, a 4 piece condiment set comprising 2 mustard pots and 2 salts, Birmingham 1945, 3 George III silver handle knives with steel blades c.1780 and other items, weighable silver approximately 14oz

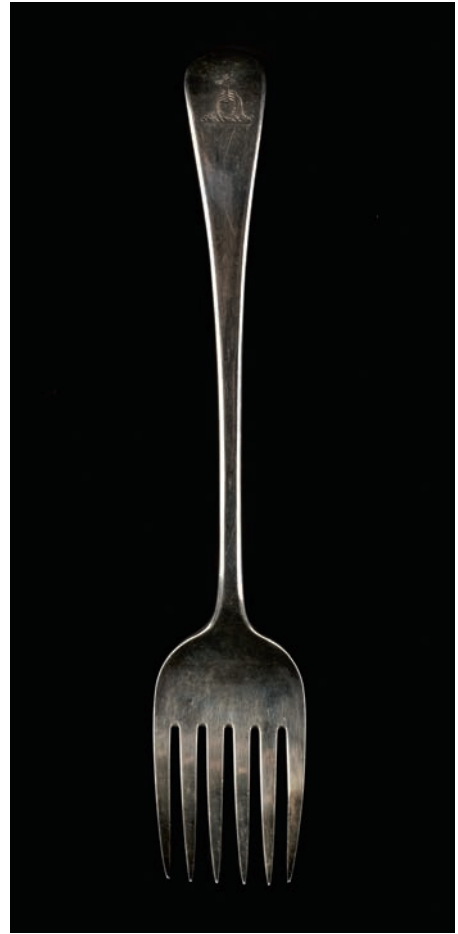
(19)

£100 - £150



129\* **Paul Storr.** A George III silver cheese scoop by Paul Storr, London 1817, *fiddle, thread and shell pattern engraved with a family crest depicting a horse on a coronet, good clear marks, 23.5cm long, approximately 3oz*  
(1) £300 - £500

130\* **Serving Fork.** A George III silver serving fork by Eley, Fern & Chawner, London 1812, *of plain form engraved with a family crest, 28cm long, approximately 4oz*  
(1) £100 - £150



Lot 130



131\* **Serving Fork.** A Victorian silver fiddle and thread serving fork by John & Henry Lias, London 1847, *engraved with 'C', 28cm long, heavy gauge weighing approximately 7oz*  
(1) £80 - £120

132\* **Snuff Box.** A Continental silver snuff box, *of oval form embossed with a shepherd boy and flock, the sides with repeating neo-classical decoration, hallmarked on side, 6.5cm long, together with a modern silver model of three squirrels (weighted), three Japanese netsuke including two boxwood both signed and other items*  
(7) £70 - £100





**133\* Snuff Box.** A George III oval silver snuff box by Phipps & Robinson 1801, engraved with a wreath and wrigglework border, the base formerly hinged but now secured firmly and inoperable, 7cm long, approximately 2.5oz, together with a George III silver and steel carving set by Moses Brent, London 1788, the reeded silver grips engraved with a family crest depicting a unicorns head, the knife 34cm long, weighted (3)

£80 - £120



**134\* Spoons.** A collection of dessert and table spoons, including a set of 6 Victorian fiddle pattern spoons by Thomas Hart Stone, Exeter 1863, a pair by William Woodman, Exeter 1823, a set of 4 by Jonathan Hayne, London 1831, a pair by Edwin Henry Sweet, Exeter 1853 and other spoons, total weight approximately 40oz (25)

£400 - £600



Lot 135

**135\* Spoons.** A collection of silver dessert spoons, including 3 George III spoons by Thomas Wallis & Jonathan Hayne, London 1817, a pair of George III spoons by George Smith & William Fearn, London 1788, a pair of George III spoons by William Eley, London 1808, plus various single spoons including a Victorian cased spoon by Samuel Whitford, London 1884, total weight approximately 26oz (18)

£200 - £300



**136\* Spoons.** A collection of silver dessert spoons, including a set of 6 George III spoons by Alexander Rollo, Edinburgh 1812, a pair by James McKay, Edinburgh 1825 a set of 4 probably by Thomas Chawner, single spoons including David Reid, Newcastle 1861, Josiah Williams & Co, Exeter 1875, Smith & Gamble, Dublin 1831 and other spoons, total weight approximately 26oz (23)

£200 - £300

**137\* Spoons.** A collection of silver serving spoons, including a George III spoon by Hester Bateman, London 1785, another by William Welch II, Exeter 1805 and other spoons, total weight approximately 33oz (12)

£300 - £500



**138\* Sugar Tongs.** A collection of silver sugar tongs, including a pair of colonial tongs probably Calcutta or Madras by Thomas Gordon c.1825, fiddle pattern with shell bowls (with a detailed letter dated 1979), a George III bright-cut pair by Peter & William Bateman, London 1807, another George III pair makers mark worn, Newcastle c.1800, a Scottish Provincial pair by George Sangster, Aberdeen c.1870 with shell bowls and other tongs, total weight approximately 10oz (8)

£100 - £150



Lot 140

139\* **Teaspoons.** A collection of silver teaspoons, including a set of 10 Victorian teaspoons by Wakely & Wheeler, London 1890, engraved with floral decoration, total weight approximately 39oz (approximately 70) £300 - £500

140\* **Toddy Ladle.** A George III silver-gilt toddy ladle by John Shea, London 1809, finely engraved with a repeating foliate decoration and twisted stem leading to an urn shape terminal, the bowl similarly engraved and richly gilded throughout, 37cm long, approximately 2.5oz

(1)

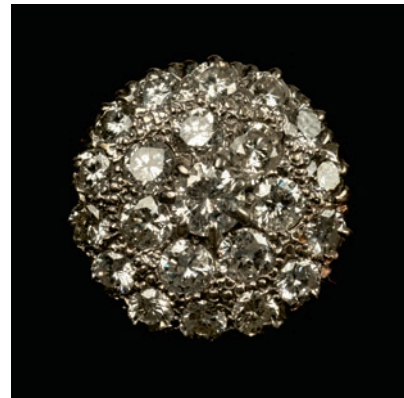
£100 - £150



141\* **Ring.** An 18ct gold & platinum diamond and ruby ring, the large facet cut ruby surrounded by 30 brilliant-cut diamonds presented in an illusion setting, the ring stamped 18ct & Plat, size K/L, total weight approximately 6.7g

(1)

£400 - £600



142\* **Ring.** An 18ct gold diamond cluster ring, set with a large central brilliant-cut stone surrounded by 21 smaller stones, stamped 18ct, size P, total weight approximately 7g

(1)

£400 - £600



## WATCHES



**143\* Rolex.** A gentleman's Rolex Oyster Perpetual Submariner wristwatch, serial number U286797 (1997), gold and stainless steel with blue bezel and dial, Oyster bracelet numbered 93153 401B, in excellent fully working condition with original green leather and cardboard box plus Rolex Official Chronometer Certification booklet and three Rolex promotional booklets

(1)

£5,000 - £7,000



**144\* Cartier.** A modern ladies le must de Cartier silver-gilt wristwatch, circular black dial gold makers markings with Swiss movement, the backplate stamped 'Cartier Paris 925 Quartz Argent Plaque or G-20 Swiss 18 039333' on a snakeskin strap, with original red and gilt leather box and paperwork contained in similar wallets

(1)

£200 - £300



**145\* Pocket Watch.** A fine Victorian enamel pocket watch, with white enamel dial, black Roman numerals interspersed with stars, similarly decorated around the blued steel hands, the silver-gilt case embellished with pearls and the back with a fine enamelled portrait of a young woman, the hinged cover enclosing a very fine gilt metal movement housed under glass with hallmarks for London 1844 and numbered 83242, with key

(1)

£300 - £500



146 **Pocket Watch.** A French yellow metal ladies fob watch c.1900, with engraved gold dial, black roman numerals and hands, elaborate foliate case, the back inset with pearls on a black enamel ground, the inner cover engraved 'No 2943 Echappement A Cylindre QuatreTrous En Rubis, J. Muller' with a fine yellow metal chain with brooch fitting inset with pearls, contained in a Fattorini & Sons box with key  
(1)

£200 - £300



147 **Pocket Watch.** An 18th century pair case pocket watch by John Downes, London c.1750, with white enamel dial, black Roman numerals and gold hands, with verge fusee movement and signed and numbered 2671, the outer case with tortoiseshell veneer but in poor condition, with key  
(1)

£150 - £200



## CERAMICS & GLASS



Lot 148

**148\* 1st Earl of Durham.** A fine Wear Flint Glass Company finger bowl c.1820, the heavily cut glass bowl with mitre cut lozenges and coat of arms of John Lambton, 1st Earl of Durham, the crest having a rams head above a shield, with the motto beneath 'Le Jour Viendra' (The Day Will Come), signed Greener Sculpt, minor chips notably around the top rim and a more obvious chip to the lower section of one of the shaped rims, 10cm high x 14cm diameter  
Provenance: Collection of Jack Webb (1923-2019), London.

The lot includes two magazine cuttings, one from County Life c.1976 featuring a wine goblet from the same service (Alan Tillman (Antiques) Ltd).

John George Lambton, 1st Earl of Durham, GCB (1792-1840) was a Whig statesman, colonial administrator, Governor-General and high commissioner of British North America, also known as "Radical Jack". He was prominent in many reform movements, especially the Reform Act of 1832, and played a key role in the colonisation of New Zealand.

On 12 September 1823, the Wear Flint Glass Company, Sunderland, took part in a procession through the streets of Newcastle and Gateshead. The Tyne Mercury records 'A Prince of Wales decanter and four wines, engraved with the arms of J G Lambton Esq.' as being among the glass carried aloft by the men. The John Hutton glass collection (1992) refers to and also features a similar (if not the same) goblet featured in the magazine cutting referred to above.

(1)

£200 - £300



Lot 149

**149\* Baccarat.** A 19th century clear glass vase probably Baccarat, the flat tapered vase with koi carp moulded decoration, chips to the inner rim of the neck, some scratches, 24cm high  
Provenance: Collection of Jack Webb (1923-2019), London.

(1)

£200 - £300

**150\* Decanters.** A George III glass mallet shape decanter, with slice cut decoration, replacement mushroom stopper, 25cm high, together with a fine pair of Victorian cut glass decanters, each of mallet form engraved with exotic birds and grape and vine decoration, the teardrop stoppers similarly engraved, 29cm high, a pair of Victorian cut glass decanters each with tot glass stopper, 24.5cm high plus six cut glass tumblers and an early 20th century Continental blue glass vase with printed decoration depicting Napoleon, 32cm high

(12)

£100 - £150

**151\* Mixed Glassware.** An 18th century cordial glass, with cotton twist stem, damaged, 17.5cm high together with another cotton twist glass, damaged, 18th century blue glass pedestal bowl with enamel decoration, old staple repair, 12cm high, a Victorian heavily cut glass goblet, 14cm high, a 17th century onion shape bottle with a deep lustre finish, damaged, 15cm high and other items  
Provenance: Collection of Jack Webb (1923-2019), London.

(11)

£70 - £100



Lot 152

**152\* Moon flask.** A late 19th century purple and pink glass overlay japonaserie moon flask, *engraved with a newt amongst foliage, the opposite side similarly engraved, the neck, handles and foot cut with grooves, 20cm high*

Provenance: Collection of Jack Webb (1923-2019), London.

(1)

£200 - £300

**153\* Queen Charlotte.** An 18th century glass bowl, c.1790, *the oval bowl heavily cut with turret edge and bearing the cypher of Queen Charlotte with a crown and swags, 7cm high x 26cm wide*

Provenance: Collection of Jack Webb (1923-2019), London.

Charlotte of Mecklenburg-Strelitz (1744-1818) was the wife of George III.

(1)

£200 - £300

**154\* Tumbler.** A Victorian glass presentation tumbler 1897, *engraved with the inscription 'Annie Davis, Esto Memor Brevis Aevi, November, XVI. MDCCCXCVII', with an olive branch beneath and a spray of flowers, slice cut with star cut base, 9.5cm high, presented in a mahogany box with key and manuscript notes detailing the history of the piece*

Provenance: Collection of Jack Webb (1923-2019), London.

The notes read as follows 'It is to be hoped and requested that this record and box be kept by those claiming the tumbler in order that in years going by the history of the same may be known, D.W. Darling (Darnell William Darling). Translation of motto on tumbler 'be mindful of the shortness of life, November 16th 1897'.

(1)

£70 - £100

**155\* Uiterwaal (Stephanus Albertus, 1889-1960).** Madonna and Child, Leerdam, 1929, *frosted glass sculpture, factory mark to base, 37cm (14 in)*

(1)

£100 - £150

**156\* Webster (Jane).** A curved glass diamond point engraving 1979, *the curved glass finely engraved with a rural landscape, signed and dated lower right, mounted on a composite base, 47cm wide x 30cm high*

Provenance: Collection of Jack Webb (1923-2019), London.

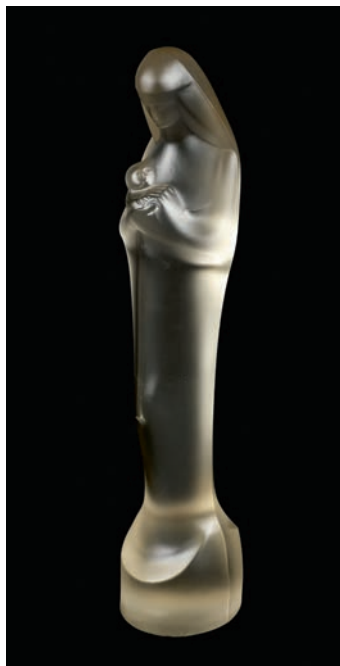
Sold with an exhibition catalogue, *Glass Engraving Resurgent, The wWork of the Guild of Glass Engravers*, Ashmolean Museum 1979, which features work by Jane Webster.

(1)

£100 - £150



Lot 153



Lot 155



Lot 156





157\* **WMF.** An early 20th century WMF myra glass bowl, with an iridescent crackle finish on a pronounced foot, 28cm diameter, displayed on a Chinese hardwood stand

Provenance: Collection of Jack Webb (1923-2019), London.  
(1)

£70 - £100

158\* **Blue and White.** An 18th century Chinoiserie coffee pot, painted with pagodas, with domed cover and knob, moulded spout and handle, hairline crack, 24cm high, together with a collection of early 19th century and later blue and white ceramics including a pair of meat plates printed with insects and foliage, one with impressed Spode mark the other printed, 42 and 43cm long, a Spode tureen decorated in the 'Carmanian Series' c.1810, with cover, impressed Spode mark to base, 20cm long, an octagonal bowl by Heathcote & Co, printed with a shepherd boy and cattle before a country house, 28cm long and other items

Provenance: Collection of Jack Webb (1923-2019), London.  
(10)

£100 - £200



Lot 159

159\* **Coalport.** A George III "Warwick vase" probably by Coalport c.1820, the elaborate vase with grape and vine moulded handles and decoration with a presentation inscription 'TO MR JAMES HEATHER SENIOR, A humble, though grateful tribute, expressive and respectful Attachment, and grateful sentiments, for protection offered, and favours received, from the hands of the respected Individual to whom this trifle is presented, by a select few who have experienced his Benignant Patronage 1820', painted with floral sprays on a square pedestal base, unmarked, 26cm high x 35cm wide

Provenance: Collection of Jack Webb (1923-2019), London.

(1)

£100 - £150



160\* **Communism.** A pair of modern Chinese porcelain half busts modelled as Karl Marx and Joseph Stalin, the base with Chinese moulded characters, both restored, 26cm high

Each with a QC code IconApp (Iconastas Russian Art, London).

(2)

£100 - £150



161\* **Communism.** A Chinese mid 20th century porcelain figural group modelled as Mao and Lenin, Lenin seated with hand resting on Mao, on an oval base, restored, 35cm high

(1)

£100 - £150



Lot 163

**162\* Dessert Service.** A Victorian porcelain dessert service, comprising, pedestal fruit bowl, 17 plates and 6 bowls, all painted with floral sprays on a white and peach coloured ground, some pieces damaged notably the fruit bowl and general rubbing to the gilding, 18.5cm high x 31cm high, the plates 23cm across (24) £70 - £100

**163\* Drug Jar.** A 19th century Italian majolica drug jar, for E. Rabarb., decorated with a hunting scene with two rope-twist handles, N mark painted on base, some damage notably to the rim, 35cm high Provenance: Collection of Jack Webb (1923-2019), London. (1) £200 - £300

**164\* English Ceramics.** A mixed collection of 18th century porcelain including three teabowls, one in the famille rose style and two blue and white decorated with pagodas, together with four blue and white saucers, all different including one with an old label inscribed 'P. Christian 1765-76 c.1770', 13cm diameter (damaged), a 19th century blue and white delft serving plate probably Dutch, 32cm long and other items, some pieces damaged (a carton) £70 - £100



Lot 164

**165\* Flask.** A novelty pottery flask probably 19th century, modelled as the head of a man with long side burns, the two handled flask with a cream glaze and damaged, 21cm high Provenance: Collection of Jack Webb (1923-2019), London. (1) £70 - £100



**166\* George III.** A rare Wedgwood white ware Jubilee pattern teapot and cover c.1810, of octagonal form printed with a portrait medallion of George III and badge and chain of the Order of the Garter, with overpainted flowers on a stippled geranium coloured ground, the handle and spout gilded, the spout is chipped and the underside of the inner rim of the teapot has three chips, there is some general rubbing to the gilding, 24cm long Provenance: Collection of Jack Webb (1923-2019), London.

Sold with a letter to the owner from *The Antiques Dealer and Collectors' Guide* dated 15 October 1956, in which they identify the teapot as a specimen. The set was executed by royal command and presented to King George III by his family on his jubilee in 1810. The set may have been made under the personal direction of his daughter, Princess Elizabeth, as the princess herself was an artist of talent, studying under Gainsborough. The engraver who carried out the designs for the insignia of the Order of the Garter was John Robinson, whose name is entered in Wedgwood's account books. Sets of Jubilee ware, though made for the royalty, were put on sale in the firm's London showrooms (Country Life, 22 November 1962, refers). (1) £200 - £300



Lot 165





167\* **Jug.** A George III period oversized pottery jug by Chetham & Woolley c. 1796-1810, *relief decorated with huntsmen and hounds, brown painted spout collar and handle, old restoration and rivets to the spout and neck, 30cm high*

Provenance: Collection of Jack Webb (1923-2019), London.

(1)

£70 - £100

168\* **Mixed Ceramics.** A collection including a Royal Worcester porcelain wall plaque painted by Bryan Cox, *showing a Nuthatch on a branch, 16 x 11.5cm, mount aperture, gilt frame, frame size 31 x 26.5cm, together with a pair of vases by the same artist showing a Green Woodpecker and a Kingfisher on the opposite side on a yellow ground, the base titled and signed by the artist, the other vase showing a Chaffinch and a Robin, 17.5cm high, a Royal Worcester fruit painted cylindrical vase by K. Blake (damaged) 16cm high, Royal Worcester "Heritage Collection" urn and cover and other items*

(11)

£100 - £150

169\* **Mixed Ceramics.** A collection of ceramic birds, *including a Herend Cockrel, 25cm high, Royal Crown Derby Green Woodpecker (boxed), Royal Crown Staffordshire Flycatcher by Doris Lindner, Royal Crown Derby Blue Tit (boxed), Royal Crown Derby Long Tailed Tit (boxed), and other animals including a Royal Crown Staffordshire "Hare" by B. Linley Adams*

(10)

£70 - £100

170\* **Mixed Ceramics.** A collection of decorative ceramics, *including a plaster model of Temple Bar, London, housed in a glass display cabinet, 17cm high x 22cm wide x 16cm deep, a pottery plate printed in green with presentation inscription 'In works of labour or of skill I would be busy too. For Satan finds some mischief still for idle hands to do' 'Presented to the prisoners of White Cross St Prison by Charles Pearson Govr Pro Tem 1858', Copeland Spode mark to base and old printed label 'James Blewitt Boxted Hall Colchester, general crazing, 27cm diameter and other items including a Chinese celadon figure of Guanyin, crazed and damaged, 15cm high*

Provenance: Collection of Jack Webb (1923-2019), London.

(14)

£70 - £100

171\* **Mixed Ceramics.** A collection of decorative ceramics, *including a Royal Worcester coffee set, comprising 6 coffee cans and 6 saucers each painted with flowers, black marks, contained in original cardboard box (unused), together with various late 18/19th century ceramics including a Flight Barr & Barr cup painted with Goodrich Castle on the River Wye (poor condition), another Flight Barr & Barr cup with floral decoration (damaged), a continental porcelain pug dog 13.5cm high and other items*

(3 cartons)

£100 - £200

Each lot is subject to a Buyer's Premium of 20%  
(Lots marked \* 24% inclusive of VAT @ 20%)



172\* **Nelson (Horatio, 1758-1805).** An early 19th century Delft bowl, *polychrome painted with a portrait of Admiral Lord Nelson and Flagship, additionally decorated with floral sprays, vertical stress cracks to the rim and general crazing, 29cm diameter*

(1)

£300 - £500

173 **Royal Crown Derby.** A large 'Posy' pattern dinner service, *comprising 10 dinner plates, 6 side plates, 7 smaller side plates, 13 sandwich plates, 9 tea cups, 9 saucers, 2 twin handle bowls, 2 large teapots, 2 bachelor teapots, coffee pot, 2 lidded sugar pots, 6 various milk and cream jugs, jug, sauce boat and stand, meat plate, 3 various plates, sugar bowl, 7 small dishes (various shapes), tea strainer, spoon and knife, some damage but generally in good condition*

(2 cartons)

£200 - £300



174 **Royal Doulton.** A collection of dog brooches, *comprising a German Shepherd, Beagle (damaged) and two other both lacking pin back*

(4)

£70 - £100



175 **Royal Doulton.** A unusual Victorian salt glaze stoneware fire hydrant jug by Frank Butler c.1890, *finely detailed in the form of a fire hydrant with beaded and scroll decoration, the cover with raised knob, the base with impressed Doulton stamp, England and 8162, incised artist monogram, and numbered 589, small firing crack to rim of interior otherwise in good condition, 23cm high*  
(1) £200 - £300



Lot 176



Lot 177

176\* **Royal Worcester.** "Cat Eating" modelled by Stella R. Crofts (2897), *purple mark, 15cm long*  
(1) £100 - £150

177\* **Royal Worcester.** "Sheep" modelled by Bargas (3155), *green mark, 13cm long*  
(1) £200 - £300



178\* **Royal Worcester.** A collection of animal brooches, mostly dogs and birds, *comprising two foxes, 7.5cm long, Sealyham, Dandy Dinmont, Fox Hound, Cocker Spaniel, Pekingnese, Wire Haired Terrier, Peke, Robin, Penguin, two Kingfisher, Perch, Snipe and a Parroquet*  
(16) £200 - £300



179\* **Royal Worcester.** A collection of animal menu holders, *comprising Airedale (2959), Cocker Spaniel (2961), Alsation (2971), Collie (2963), Wire Haired Terrier (2970), Springer Spaniel (3007), West Highland Terrier (2969), Setter (2966), Field Spaniel (2962), Pheasant (2988), Owl (2980), plus a Crown Staffordshire menu holder of two hunting dogs*  
(12) £150 - £200





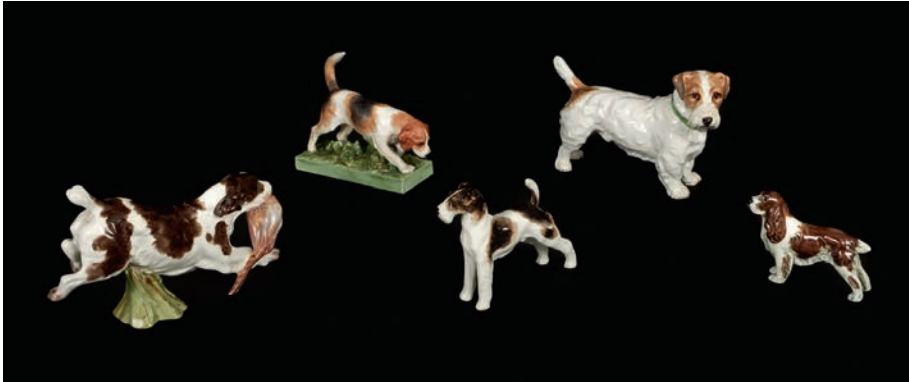
Lot 180



Lot 183



Lot 181



Lot 182



Lot 184

180\* **Royal Worcester.** A collection of cats modelled by F.G. Doughty, comprising three Short Haired Cats (3616), two Long Haired Cats (3615), black stamps, approximately 10cm high

(5)

£100 - £150

181\* **Royal Worcester.** A collection of coffee cans and saucers comprising, a Ptarmigan can and saucer by G. Banks, can 6cm high, saucer 12cm diameter, Golden Plover by L Maybury, together with mixed coffee cans and saucers (all non matching), artists include James Stinton, P.H. Platt and other artists, some damage

(19)

£200 - £300

182\* **Royal Worcester.** A collection of dogs including Ranter by Miss A. Ellis, matt glaze (3356) purple mark, 11.5cm long, a spaniel catching a pheasant (3311) black mark (damaged) 16cm long, plus 2934, 3033 and another

(5)

£100 - £150

183\* **Royal Worcester.** A collection of fox and hounds, comprising three fox cubs (3131), purple mark, "Fox" modelled by Doris Lindner (2997) purple mark, 13.5cm long, a similar piece modelled as a hound (2996) purple mark, 13cm long, "Fox" modelled by Doris Lindner (2950) and "Hound" by the same modeller (2951), both on a curved base with purple mark, 10cm long, two further hounds numbered 3528 and 3571, plus two foxes numbered 3527 and 3570

(9)

£200 - £300

184\* **Royal Worcester.** A collection of tea cups and saucers, comprising, a pheasant cup and saucer by James Stinton, tea cup 5cm high, saucer 9.5cm diameter, another of sheep by E. Barker (hairline to the cup), three fruit painted cups and saucers by W. Hale and two by Ricketts (with hairline to the saucer), together with an assortment of mixed tea cups and saucers (all non matching)

(18)

£200 - £300



185\* **Royal Worcester.** A collection of Zoo Babies, comprising a pair of bears (3315) purple stamp, 15cm long, a pair of lion cubs (lacking any marks), 15cm long, a pair of leopard cubs (lacking number and restored) purple mark, 15cm long, a tiger (2780) purple mark, 11cm long plus three koalas (3273) purple mark, 12cm long, and a model of tiger cubs, (3318), black stamp, 16cm long (6) £200 - £300

186\* **Royal Worcester.** A large collection of porcelain birds, comprising Kingfisher (3235), Fledgling Wren, Yellow Hammer (3377), Thrush (3234), two Chaffinches (3364), two Coal Tits (3376), two Pied Woodpecker (3363), Blue Tits (3375), two Thrush (3234), two Linnets (3365), Yellow Hammers (3377), smaller birds comprise, Wren (3198), Nuthatch (3324), Western Tanager (3650), Waxwing (3648), Nightingale (3337), Blue Jay (3646), Blue Bird (3649), Hedge Sparrow (3333), Marsh Tit (3336), Blue Tit (3199), Sparrow (3236), Red Cardinal (3645), Goldfinch (3239), two Chaffinch (3240) (one damaged), Robin (3197), American Robin (3647), Gold Crest (3338), Bullfinch (3238), Great Tit (3335) and Wood Warbler (3200) (36) £150 - £200

187\* **Royal Worcester.** A mixed collection mostly dogs, including a cocker spaniels desk calender modelled by Doris Lindner, 12cm long, a Royal Worcester cocker spaniel ashtray, another ashtray with a terrier on green onyx base, two desk calenders on onyx bases, pair of terriers and onyx bookends and other items (11) £100 - £150

188\* **Royal Worcester.** A mixed collection of porcelain birds, comprising two large Woodpecker (3249), Jay (3248), together with smaller glazed birds, Robin (3197), Goldfinch (3239), Nuthatch (3334), Great Tit (3335), Thrush (3224), Chaffinch (3240), Bullfinch (3233), Gold Crest (3338), Wood Warbler (3200) and Wren (3198) (13) £80 - £120



Lot 189

189\* **Royal Worcester.** A pair of bookends, modelled as "Sam" the Polar Bear by Ethelwyn Baker, hairline cracks, 16.5cm high mounted on wooden stands (1) £70 - £100



190\* **Royal Worcester.** A pair of circular porcelain wall plaques painted with cats by Bryan Cox, one with a mother and her litter resting on a cushion, the other with a mother and her litter on a carpet with a ball of string close by, both signed lower right, 26cm diameter presented in gilt frames, frame size 43 x 43cm (2) £150 - £200



191\* **Royal Worcester.** A small vase and cover decorated with pheasants by James Stinton, the ovoid vase with pierced and gilt painted rim and foot, numbered 278 H, purple mark to base, 9cm high (1) £100 - £150





192\* **Royal Worcester.** A Royal Worcester vase decorated with highland sheep by Ernest Barker, the long slender vase with pierced neck on four scroll feet, green mark to base, 15cm  
(1) £200 - £300

193\* **Royal Worcester.** "Foals" modelled by Doris Lindner (3152), green mark, 13cm long together with "Foal" modelled by Geraldine Blake (3187), 15cm long  
(2) £100 - £200

194\* **Royal Worcester.** Fox and Hound models, numbered 2993 and 2994 (fox with hairline cracks on base), purple marks, 18cm high together with a similar pair of wall masks numbered 3024 and 3025, black marks, fox 12cm long, hound 10cm  
(4) £150 - £200



195\* **Royal Worcester.** 'Maytime' by Doris Lindner, modelled as two lambs (3123) green mark, 10cm long  
(1) £100 - £150



Lot 193



196\* **Royal Worcester.** Two calf models by Stella R. Crofts, (2896), purple marks, 7.5cm long  
(2) £150 - £200



Lot 194





Lot 197



Lot 199

197\* **Wedgwood.** A pair of 19th century 'Dancing Hours' black basalt urns, each decorated in high relief with a procession of girls holding hands with two bacchanalian handles on a socle base with square foot, impressed Wedgwood mark to base, each lacking cover, both with a handle crudely restored and one with chips to the base, 20cm high, together with a similar Wedgwood urn (damaged) plus an 18th century mottled brown marble urn, carved with Vitruvian scrolls and bucranium skulls united by swags, on a gilt metal socle with circular foot, lacking monopodium handles, 21cm high  
Provenance: Collection of Jack Webb (1923–2019), London.

Dancing Hours is attributed to John Flaxman (1755–1826) and dated to c.1778. It was a popular choice notably incorporated in friezes and fire surrounds. The Dancing Hours depicts the classical Horae, personifications of the hours of the day.

(4) £100 – £150

198\* **Wilson (John, 1785–1854).** A Victorian Copeland parian figure of the writer Professor John Wilson, modelled standing with a robe across his shoulder, one hand holding a scroll resting on a column, the base impressed 'Jn Steell. R.S.A. Sculpt. F. linr 1866', the rear 'Royal Association Edinburgh Published August 1866 Copeland', 45cm high  
Provenance: Collection of Jack Webb (1923–2019), London.

John Wilson of Elleray FRSE (1785–1854) Scottish advocate, literary critic and author, was also known under the pseudonym Christopher North of Blackwood's Edinburgh Magazine. Wilson was Professor of Moral Philosophy at the University of Edinburgh from 1820–1851.

(1) £70 – £100

199\* **Worcester.** A Victorian Worcester copy of a Chinese armorial plate, with blue printed decoration bearing the arms of the Earl of Charlemont, the border representing the collar and the badge of the Order of St Patrick, blue printed mark to base for 1881, the glaze very scratched and some staining, minor chip to the underside rim, 24.5cm diameter  
Provenance: Collection of Jack Webb (1923–2019), London.

James Caulfield, 1st Earl of Charlemont KP PC (Ire), Irish statesman (1728–1799), was born in Dublin and had a passion for classical culture having spent nine years on a Grand Tour in Italy, Greece, Turkey and Egypt. After his return to Dublin he employed the Scottish architect Sir William Chambers to remodel his main residence Marino House into a unique neo-classical garden pavilion building, the Casino at Marino. He was also the first president of the Royal Academy and in 1793 was made a founding Knight of the Order of St Patrick.

(1) £100 – £150



Lot 198



## FOSSILS & MINERALS



200\* **Ammonite Plate.** A multiple ammonite plate, Jurassic Period, Lyme Regis, Dorset, *this piece has 3 Asterocheras and 8 Promicrocheras on this lovely shard of rock, the largest ammonite measures 6.3cm across*

(1)

£500 - £600



202\* **Drotops megalomanius.** One of the larger trilobites from the Devonian Period, Morocco, *the specimen has been cleaned away from the surrounding rock and even the Hypostome has been revealed from the underside, measuring 13cm along its axis*

This is a very well preserved example from the Lower Devonian of Morocco.  
(1)

£200 - £300



201\* **Cleoniceras.** This Ammonite had been cut through its centre and then polished to reveal the intricate chambers which have been preserved in Calcite and Limestone, *measuring approximately 17.5cm across*

A large and impressive display fossil.

(1)

£150 - £200



203\* **Fossil Starfish.** A Brittlestar, Ophiuroidea from the Middle Ordovician of El Kaid, Morocco, *an attractive specimen with lots of fine detail, the fossil is preserved in a coating of Limonite which gives the fossils its orange colouration, the matrix measures approx. 24cm x 14cm*

(1)

£70 - £100



Lot 204

**204\* Fossil Wood.** A large fossil wood section, Triassic Period, Madagascar, *this fossil wood slice is polished on both sides, weighs several kilos and measures over 46cm across the face*  
An interiors piece.

(1)

£200 - £300



Lot 205

**205\* Fossils & Minerals.** A collection of fossils and minerals, including a Green River Formation fish from the Eocene Period of Wyoming, 19cm set in its matrix, three vertebrae, fossil wood section 40cm long, an ammonite inscribed Wedgcock Park 1889, 13cm across, iron pyrites, quartz crystal, a collection of polished hardstone eggs and other items

Provenance: Collection of Jack Webb (1923-2019), London.

(2 cartons)

£200 - £300



**206\* Hand Axes.** A pair of Prehistoric hand axes, dating from the Acheulian period (between 1.2 million years and 500,000 years old), *both found in North Africa and were fashioned by Homo Ergaster, an exceptional and very rare pair of axes that measures 14.5 and 18.5cm*

(1)

£150 - £200





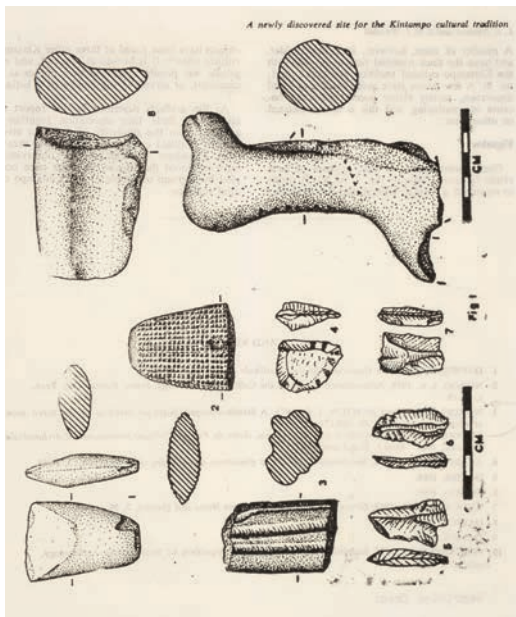
207\* **Marston Magna Ammonite.** A Marston Magna ammonite display fossil, Jurassic Period, Somerset, *there has been over 80 hours of work to reveal all of the small ammonites, both sides of the rock have been cleaned to reveal hundreds of ammonite specimens, 28 x 27cm*  
(1) £2,000 - £3,000



208\* **Megalodon Tooth.** A large Megalodon Shark Tooth, Miocene Period of Java, a beautiful tooth with near perfect serrations throughout, the tooth measures approximately 15cm in length (from tip to the edge of the root)

(1)

£600 - £800



Lot 209

209\* **Neolithic Tools.** A collection of Neolithic tools from the Leonard Newton Collection, including a collection of 9 Kintampo Neolithic items that were found and collected in the field during botanical fieldwork when Leonard Newton worked in Ghana, they feature in an article in the paper on the *Kintampo Neolithic* titled A Newly Discovered Site For The Kintampo 'Neolithic' Cultural Tradition Near Kumasi, together with 5 Discoid Scrapers (Neolithic found in Kenya), various Obsidian blades / points, Obsidian Lunates (Neolithic, Kenya) plus other items including 8 large Palaeolithic hand tools c.500,000 BC used by the Homo erectus in Kenya, largest 25cm, smallest 12cm (carton) £200 - £300

Many of the items were found in the course of some botanical field work on a granite outcrop near Kumasi Airport, several artificial holes and grooves on the exposed rock surfaces were spotted, and a number of artefacts were found lying around. The Kintampo were a Neolithic culture c.3500 years ago.

(carton)

£300 - £500



210\* **Paradoxides.** A Trilobite, Cambrian Period, approximately 490 Million years old, this is a very well preserved specimen which is preserved in Limonite which gives the orange colour to this impressive interiors piece, the specimen measures 28cm with a larger matrix

(1)

£200 - £300



211\* **Perisphinctes.** A Perisphinctes Ammonite, Jurassic Period of Madagascar, this specimen measures 40cm across and has had the entire host rock removed so that it is freestanding on a custom metal base

(1)

£600 - £700





Lot 212

**212\* Plesiosaur Paddle.** This is a Humerus bone from a Cryptoclidus that was found in Peterborough in the 1980s, *many hours of work has gone into exposing this extremely rare British fossil, the bone measures 39cm in length with a larger matrix*  
(1) £500 - £700

**213\* Seashells.** A pine case containing 2 trays and a drawer of seashells, *with hinged lid and metal carry handles, the front with removable section revealing drawer, shells include: a variety of cowries (including a number of Cypraea depressa, Cypraea caputserpentis, Cypraea vitellus and others), a few small bubble shells, various clams, a couple of spider conches, cone and turban shells, ark shells, a pen shell, a few cockles and oysters, etc., 21cm high x 48cm wide x 39.5cm deep*  
(1) £200 - £300

**214\* Spinosaurus Tooth.** This tooth is fully rooted with good ornamentation to the blade, *a beautiful example which is extremely large at 15cm*  
This is an exceptional tooth from one of the largest predators to have walked on earth.  
(1) £200 - £300



Lot 214



Lot 213



215\* **Stephanoceras.** An Ammonite, approximately 170 Million years old, Yeovil, Somerset, *this highly ribbed ammonite is in very good condition with preservation to the very centre of the ammonite, measures approximately 19cm across*  
(1) £300 - £400



216\* **Stingray.** A stingray from the Cretaceous Period, Lebanon, *this is a very rare and well preserved fossil with fine detail to the fringes of the fins, a rare and beautiful fossil that measures approximately 11.5cm in length, the rock measures approximately 17 x 14cm*  
Stingrays are members of the cartilaginous fish group and as such do not easily preserve as fossils.  
(1) £500 - £600



217\* **Woolly Rhino Jaw.** A Woolly Rhino jaw found in Poland, *this is a very large low left mandible from an adult Woolly Rhino with three intact teeth, the specimen measures 53cm in length and would have come from an adult*  
(1) £400 - £500



**THE DAVID WILSON TAXIDERMY COLLECTION  
PART I**



218\* **Taxidermy.** Bittern, 1873, in wooden case glazed on one side, in elaborate naturalistic setting incorporating nest, watercolour backdrop with pin-fastened manuscript label ('Bittern, shot at Rownhams, Southampton'), manuscript labels to glass and to reverse of case (the latter reading 'Bittern, Botaurus Stellaris, Shot at Rownhams, Southampton by B. Akers. Bought of him in 1873. Set up by [illegible]'), 82 x 60.5 x 28cm  
(1) £200 - £300

219\* **Taxidermy.** Black guillemot in summer plumage by E. T. Clarke of Cheltenham, 1913, on sandy green plinth, old lot label and manuscript annotation to underside ('Black guillemot ... killed Feb 26 1913 ... Bt of E. T. Clarke, Cheltenham, May 26 1913), approximate height (including plinth) 24cm, together with:  
Guillemot, late 19th/early 20th century, housed in glass dome on naturalistic base with pebbles and sand, ebonised wooden plinth, old labels to dome, approximate height (including plinth and dome) 38cm, Little auk, late 19th/early 20th century, in naturalistic setting, in wooden case glazed on three sides, 29.5 x 21.5 x 10.5cm  
(3) £100 - £150



220\* **Taxidermy.** Blue-winged kookaburra (female), late 19th/early 20th century, perched on a branch with ferns and other vegetation on lozenge-shaped wooden base, 38 x 34 x 18cm  
(1) £200 - £300



Lot 219



221\* **Taxidermy.** Common kingfisher, two yellowhammers[?], three mealy redpolls, three lesser redpolls, late 19th/early 20th century, i.e. 9 specimens, all mounted on branches, attached to 5 separate wooden plaques for wall-mounting, the kingfisher and yellowhammers with additional naturalistic surround, the two redpoll groups with mounted manuscript labels 'Caught near Stockton on Tees, 25.12.[18]95' (mealy) and 'Birtley fell, male on right, female on left, 17.11.97. H. Walton; male in centre, 26.10.92, Stockton-on-Tees' (lesser)

(5)

£100 - £150



Lot 222

222\* **Taxidermy.** Great auk replica by Rowland Ward Ltd, c.1922, on a mount of sand and faux rocks, in a glass case with etched trademark of Rowland Ward Ltd, damage to beak, crude tape-reinforcement to frame of case, case dimensions 67 x 56 x 34.5cm Provenance: Captain Vivian Hewitt (1888-1965), aviator, ornithologist and conservationist, purchased by him from Rowland Ward Ltd in 1922 (the lot sold with copied invoice).

Illustrated (this specimen): Errol Fuller, *The Greak Auk* (Southborough, 1999), p. 112.

To meet the demand from collectors for specimens of the extinct seabird Rowland Ward Ltd began to produce these skilful replicas, usually from razorbill feathers, though the beaks had to be made from scratch.

(1)

£500 - £800



223\* **Taxidermy.** Hobby (female) by Rowland Ward Ltd, 1911, perched on a branch issuing from wooden base with accompanying naturalistic vegetation, manuscript label to underside of base ('Hobby ... shot from nest near Thursley, Surrey, 3PM, June 21st 1911 by A. W. in mistake for sparrow hawk ... Bird mounted by Rowland Ward Ltd'), 36 x 28 x 18cm

(1)

£100 - £150



224\* **Taxidermy.** Leucistic curlew (male) by Rowland Ward Ltd, 1919, on plinth topped with sand and mounted pebbles and shells, Rowland Ward Ltd label to underside, height including plinth 38cm Provenance: Captain Vivian Hewitt (1888-1965), aviator, ornithologist and conservationist; originally shot by C. W. W. Hulse at Tonakilly Point, Tralee Bay, Ireland, 21 May 1919, and acquired by Hewitt from Hulse in 1943. With accompanying letter and notes from Hulse, two annotated photographs of the specimen, and manuscript purchase note by Hewitt (all in envelope).

(1)

£70 - £100





Lot 225

225\* **Taxidermy.** Little bittern, green woodpecker and goldfinch, late 19th/early 20th century, each in naturalistic setting in separate wooden case glazed on three sides with watercolour or oil-painted backdrop, green woodpecker and goldfinch each perched on a branch, various dimensions (33 x 25 x 13.5cm; 41 x 32.5 x 12.5cm; 27 x 19 x 8.5cm), green woodpecker case cracking in places, together with a diorama of a jay and songbird, in naturalistic setting incorporating nest against watercolour backdrop, 53 x 44 x 23cm

(4)

£100 - £150

226\* **Taxidermy.** Red knot and dunlin by Rowland Ward Ltd, early 20th century, each in separate glass case in naturalistic setting, Rowland Ward Ltd trademark to glass, Red Knot lacking top panel (replaced with transparent plastic), 29 x 27 x 17cm and 19.5 x 21 x 13cm, together with a Kentish plover (juvenile male) and great snipe (female), each in separate case glazed on one side, typescript labels 'Shot by Arthur Smith Esq., Yarmouth, August 12th 1893' (Kentish plover) and 'Shot at Great Yarmouth, Sept. 19th, 1899', Kentish plover with damp-staining to inside of case and crude clear tape reinforcement along edges of glass, each 18.5 x 26 x 14cm)

(4)

£150 - £200

227\* **Taxidermy.** Albino European mole, early 20th century, an adult specimen baring teeth, on naturalistic faux-rock mount incorporating real moss and other vegetation, on ebonised plinth within glass case, two labels to glass, approximate dimensions (including plinth) 18 x 18 x 18cm, together with another albino european mole on similar mount and plinth, without glass, approximate height (including plinth) 8cm

Albinism is estimated to occur in European moles at a rate 1:100,000 births.

(2)

£70 - £100



Lot 226



Lot 227



228\* **Taxidermy.** Wilson's storm petrel (male) by G. Bristow of St Leonards-on-Sea, 1914, on faux-rock mount, plinth with old stencilled lot ticket to front elevation and lengthy manuscript provenance note on underside (see note), approximately 23cm high from foot of plinth to wing-tip, together with:

Two fork-tailed storm petrels (male and female) by J. Cullingford of Durham, 1889, each on separate corbel in a single wooden case glazed on one side, with printed label 'Herbert Coxon's collection ... taken at St. Kilda's, June 1889' laid in, 31 x 38 x 12.5cm,

Two fork-tailed storm petrels, 1910, in naturalistic setting of rocks and shingle, in glass case with wooden backdrop, manuscript label verso dating the specimens to October 1910, 'St Catherine's Light'. (probably St Catherine's Lighthouse, Isle of Wight), joins of glazing reinforced with tape, 30 x 35.5 x 15cm

The manuscript label pasted to the underside of the Wilson's storm petrel reads: 'Wilsons petrel ... Blown ashore and caught by a dog at West St Leonards, Sussex on Dec 2nd 1914. Examined in the flesh by H. N. Ford-Lindsay Esqr. Recorded by him in Brit. Birds Vol VIII p. 199. 13th British 2nd Sussex ... Blough]t of G. Bristow, Dec 15, 1914'.

(3)

£200 - £300



Lot 228



229\* **Taxidermy.** Woodcock by W. Kidd of Godalming, 1829, in wooden case, glazed on three sides (front panel loose), landscape backdrop painted in oils, W. Kidd's printed label completed in manuscript to rear, 25 x 33 x 10.5cm, together with:

Sandpiper, 19th century, on naturalistic base of shells and seaweed, watercolour backdrop on vellum or canvas depicting sailing ships (damp-stained), 26 x 34 x 15cm

(2)

£100 - £150





Lot 230

230\* **Taxidermy.** Woodcock, meadow pipit and leucistic starling, late 19th/early 20th century, each in separate glass dome on lozenge-shaped or circular wooden base, meadow pipit and leucistic starling in naturalistic setting (meadow pipit setting including old-style golf ball), trade label of W. Lowne of Great Yarmouth to underside of base, approximate heights 29cm, 16.5cm and 33cm

(3)

£100 - £150

231\* **Taxidermy.** A fine taxidermic display c.1920, showing two pheasants in a naturalistic setting, contained in a glazed oak display case, 61cm high x 81cm wide x 24cm deep

Not part of the David Wilson Collection.

(1)

£200 - £300



Lot 231

## CLOCKS, SCIENTIFIC INSTRUMENTS & MECHANICAL MUSIC



**232\* Taxidermy.** A Victorian taxidermic cockatoo, *finely presented under a glass dome with naturalistic setting on a black wooden base, 68cm high*

Provenance: Collection of Jack Webb (1923–2019), London.  
(1)

£200 – £300



**233\* Taxidermy.** An Edwardian taxidermic Slavonian Grebe, *in a naturalistic setting and stained pine and glazed display case, 46cm high x 37.5cm wide x 23cm deep*

Not part of the David Wilson Collection.  
(1)

£70 – £100



**234\* Pocket compass / sundial.** An early 18th century pocket combination compass sundial by L. Grafts, *the octagonal brass case with circular brass compass and silvered dial, blued steel hand under glass, folding circular with a crescent index marked in degrees, folding brass gnomon, the base engraved with the latitudes of cities 'Elev a Poli', 'Eslingen', 'Stockholm' and 'Landari' signed L Grafts, 6 x 5.5cm, with an old label attached inscribed with details of a similar example in the Science Museum, London*

Provenance: Collection of Jack Webb (1923–2019), London.

(1)

£200 – £300



**235\* Sundial.** A Victorian ivory pedestal sundial by Comyns, Kings Road, Chelsea c.1840, *the paper sundial housed under convex glass, the pedestal with a thermometer and makers marks, the ivory finely detailed with leafy rim and geometric base, 11.5cm high, presented under a glass dome with oak base*

Provenance: Collection of Jack Webb (1923–2019), London.

Henry Comyns, Optician, first appeared in trade directories in 1833.

(1)

£100 – £150





**236\* Clock.** An English walnut striking bracket clock by Chater & Son, London c.1775, the five pillar twin fusee movement with original verge escapement, the dial with 7 inch silvered chapter dial engraved with black roman numerals, pierced steel hands, with calendar aperture and signed 'Chater & Son London' with fine pierced foliate spandrels, the brass back plate engraved with scrolls and foliage, signed 'Chater & Son London', the bell striking on the hour with strike or silent option on the arch, the inverted bell top case with brass carrying handle and gilt-edged doors and side windows, on brass supports, some damage to the case, notably loss of moulding to the rear, modern screws securing the movement, approximately 48cm high x 30cm wide x 20.5cm deep, with winding key  
Provenance: Collection of Jack Webb (1923-2019), London.

Sold with an original insurance valuation dated 1969 (£350) plus repair bill for overhaul dated 1969 (£35).

There were two William Chaters recorded as working in the 18th century (father and son). William Chater the elder was apprenticed in 1718, made a member of the Clockmakers Company in 1726 and died in 1762. His son, also named William, was apprentice in 1746 and died 1785.

(1)

£2,000 - £3,000



Lot 237

237\* **Clock Garniture.** An art deco marble clock garniture, the pink veined marble clock with circular silvered dial with black arabic numerals and gilt spelter dragonfly mounted to the case (damaged), on a black slate base, 45cm long with conforming garnitures  
(1)

£70 - £100



238\* **Clock.** An Edwardian style inlaid mantel clock, the silvered dial with black Arabic numerals, three train movement stamped 'Made in Germany', the arched mahogany case inlaid with paterae, 42cm high with pendulum  
(1)

£100 - £150



239 **Longcase Clock.** An early 18th century longcase clock by William Grimes, Hatton Garden London, the 10 inch silvered chapter dial with black roman numerals, engraved brass dial with pierced cherub spandrels, subsidiary seconds dial, calendar aperture, blued steel hands, two winding holes each with key, signed Wm Grimes in Hatton Garden fecit, 38 x 27cm, in a later pine case with pendulum and two weights, 188cm high  
(1)

£1,500 - £2,000





240\* **Mechanical Music.** A late 19th century Swiss "The Britannia" Polyphon by B.H.A. of St. Croix, the rectangular walnut and ebonised case enclosing movement and 30cm discs, with two winding handles, knocks and scuffs commensurate with age and use but in good working order  
(1)

£300 - £500



241\* **Mechanical Music.** A late 19th century Swiss "The Britannia" Polyphon by B.H.A. of St Croix, the walnut and ebonised case with pierced fretwork frieze and two mirrored doors enclosing movement and 30cm disc, general knocks and scuffs commensurate with age and use, in good working order, 64cm high x 48cm wide x 24cm deep  
(1)

£300 - £500



Lot 242



**242\* Mechanical Music.** A Victorian inlaid rosewood musical box, of rectangular form, the lid inlaid with floral scrolls, the hinged lid enclosing a large cylinder and mechanical movement and winding handle numbered 11258, all teeth and pins appear to be intact and the box is in good working order with a lovely tone, there is a note inscribed with the various tunes which include God Save The Queen and Auld Lang Syne, 17cm high x 64cm wide x 23cm deep

Provenance: Collection of Jack Webb (1923-2019), London.

(1) £300 - £500



Lot 243

**243\* Mechanical Music.** An American Regina tabletop polyphon, the shaped stained hardwood case with a hinged lid inset with trade label, the mechanical movement in good original condition, with ivorene trade label and instruction for use, in good working order, with various discs, 27cm high x 56cm wide x 50cm deep

Provenance: Collection of Jack Webb (1923-2019), London.

(1) £300 - £500



## FURNITURE

244\* **Armchair.** A Victorian elm wheelback armchair, 107cm high  
(1) £70 - £100



245\* **Chair.** A fine 18th century walnut child's chair, in the Chippendale style, the back splat with pierced heart shape motif, shepherds crook arms, tapestry upholstered drop-in seat on cabriole supports united by stretcher, a beautiful rich patina with an old characterful repair to the top rail, 60cm high  
(1) £200 - £300



246\* **Chairs.** A set of 8 Edwardian bent oak chairs, each with hoop back and turned spindles, solid seat on turned supports united by stretchers, some restoration and old worm holes, 83cm high  
(8) £70 - £100

247\* **Chairs.** An Edwardian elm smokers bow armchair, with curved back and arms, turned spindles, solid seat on turned supports united by stretchers, 84cm high, together with an early 20th century beech poker work spinning chair, decorated with stylised rams heads amongst acanthus scrolls, on turned supports 90cm high  
(2) £100 - £150



248\* **Child's Chair.** A 19th century child's elm Windsor chair, with hoop and stick back, curved arm rests, solid seat and turned supports united by stretchers, old repairs, 76cm, high (1) £100 - £150

249\* **Club Fender.** An Edwardian style brass club fender, of typical form with leatherette button upholstered cushions, approximately 215cm long (1) £200 - £300



250 **Coffer.** An 18th century carved oak mule chest, the lunette carved lid with three-panel front carved with lozenges and foliate decoration with one long drawer beneath with brass handles and carved with initials A H and dated 1724 on stile supports, 78cm high x 130cm wide x 50cm deep (1) £200 - £300



251\* **Cradle.** An 18th century oak cradle, of panelled construction with raised back and turned finials, 57cm high x 93cm long (1) £70 - £100

252\* **Dressing Table.** An Edwardian mahogany dressing table with oval mirror, supported by turned uprights, on rectangular base with two long and two short drawers, each with barber's pole strung inlay on turned tapered supports with ceramic casters, 157cm high x 114cm wide x 52.5cm deep (1) £70 - £100

253\* **Ercol Table.** An Ercol beech dining table and 8 chairs, the table with rectangular top with rounded corners on four splayed legs, 71cm high x 145cm wide x 73cm deep, the hoop back chairs comprising 2 carvers and 6 side chairs each with a spindle back, 6 of the chairs have been painted white, 81cm high (9) £100 - £150



254\* **Liberty & Co.** An Anglo-Moorish octagonal occasional hardwood table retailed by Liberty, profusely inlaid with brass, the base applied with retailers ivorene plaque 'Liberty Birmingham London & Paris, 47cm high x 46cm wide (1) £200 - £300



255\* **Mirror.** An Edwardian mahogany cheval dressing mirror, *the rectangular mirror supported by a slender mahogany frame each with urn finial, raised on scroll supports each with brass caster, 159cm high x 57cm wide, together with an early 20th century mahogany bedpost torchere, with circular top above fluted and acanthus carved column on three cabriole supports with claw and ball feet, 105cm high plus a Victorian mahogany towel rail*  
(3) £70 - £100

256\* **Morton (Thomas, 1859-1945).** A spinning chair attributed to Thomas Morton of Muirkirk, *with pokerwork and coloured fruit decoration in the art nouveau style, the opposite side of the high pierced back with fern decoration, solid seat on four stylised supports, 88cm high*

Thomas Morton of Muirkirk (1859-1945) specialised in applying fern ware finishes to large and small items of wood ware and furniture.

(1) £150 - £200

257\* **Sideboard.** An 18th century oak sideboard, *the rectangular top above two drawers each with pierced brass batswings handles and key plate with shaped apron raised baluster supports with block supports to the rear united by undertier shelf, on bun feet, old cracking and wear commensurate with age, 76cm high x 123cm wide x 44.5cm deep*

(1) £200 - £300

258\* **Stove.** A modern Morley green enamel wood burning stove, *the front panel with three glass windows, a hinged door to the side with brass handle, raised on four outplayed supports, 50.5cm high x 50cm wide x 32cm deep*

(1) £50 - £80



Lot 256



Lot 257



Lot 259

**259\* Table & Chairs.** A 1920s oak dining table and 8 chairs, the draw leaf table on substantial turned supports united by stretchers, 78cm high x 198cm (fully extended) x 81cm deep, the chairs all upholstered with brass studs on turned supports, 87cm high  
(9)

£100 - £150

**262\* Washstand.** An Edwardian style marble top pine washstand, the white marble with shaped splashback above a pine base with two drawers and two cupboard doors enclosing a shelf, on four bun feet, some loss of wood and old worm holes, 95cm high x 84cm wide x 52cm deep  
(1)

£70 - £100



**260\* Table.** A William IV mahogany pedestal card table, the rectangular top, hinged to reveal green baize, above a square tapered pedestal on four splayed supports with brass lions paw casters, 72cm high x 88cm wide x 44cm deep  
(1)

£100 - £150



**263\* Work Table.** A 19th century mahogany work table c.1840, the rectangular top above a drawer with divisions, on a turned baluster tripod base, 76cm high x 47.5cm wide x 36cm deep, with key  
(1)

£150 - £200

**261\* Table.** An 18th century oak gateleg table, the oval top above turned supports united by stretchers, 75cm high x 107cm long  
(1)

£100 - £150



**A SINGLE OWNER COLLECTION  
OF MOTORING MEMORABILIA**



**264\* Advertising.** A mixed collection of colour advertising c.1900 onwards, including English Ovals Cigarettes, showing a pilot taking a cigarette with the caption 'The Choice at Croydon', laid on card, 45 x 52cm, together with Fine Dorset Butter and Fine Cheddar Cheese, colour lithograph laid on card, 73 x 49.5cm, plus Chocolat Suchard, Carr's Biscuits, North Pole Patent Pram Tyres, Snow fire Powder Cream, Cycles Sirius, Savannah Brewing Co and other items (24) £150 - £200



**265\* Advertising.** A 1920s Saqui & Lawrence Jewellers advertising enamel sign, London's Largest Jewellers, Eastbourne and Brighton, showing an art deco female adorning luxury jewellery, some loss of enamel notably around the edge, 70 x 49.5cm (1) £200 - £300

Each lot is subject to a Buyer's Premium of 20%  
(Lots marked \* 24% inclusive of VAT @ 20%)



**266\* Amazon Tires.** A large American monochrome photograph showing two early Chevrolet outside an Amazon Tires shop, 47 x 59cm, period oak frame, glazed, together with another large Amazon Tire photograph showing an advertising car painted by George A. Hollinger, 50 x 60cm, mount aperture, unframed plus a large American monochrome photograph of a car and figures, label inscribed verso 'first auto in Haverstraw about 1905', 40 x 50cm, period card oak frame, glazed (3) £100 - £150

**267\* Automobilia.** A collection of 7 vintage foot pumps comprising, Dunlop, Dunlop Major, Dunlop Junior (2), Kismet Baby, Kismet Juiniar amd Kismet Duplex, together with 4 car jacks including a Cadillac jack, 11 oil cans and other items (2 cartons) £100 - £150



**268\* Automobilia.** A collection of items, including a 1930s aluminium car mascot in the form of a clothed rat, standing with arms behind its back, indistinct mark to base, 10cm high, mounted on a modern trophy base, a 1920s car dashboard clock, the circular white enamel dial indistinctly signed, with illuminated arabic numerals, with 8 day movement, the case and movement stamped 'Octavo Watch Co Switzerland', overwound and inoperable, two brass petrol fillers, three miniature petrol cans including Esso and Junior Shell and other items (10) £70 - £100





Lot 269

269\* **Bates Tyres.** An original 1920s Bates Special "All Weather Cord Tyres" poster, colour lithograph on paper laid on card, two repairs upper and lower left, closed tear upper right, adhesive tape, some scuffing, 79 x 55cm, framed and glazed, together with a related Bates coupon 'For every order of 10 Bates Motor Cycle Covers or Tubes an Additional Discount of 10% will be given' printed by the Dunlop Rubber Co. Ltd, creases, 7.5 x 12.5cm (2)

£100 - £150



Lot 272

270\* **Bergougnan Tyres.** A Ber-Goon-Yon advertising board c.1920, colour lithograph on card, eyelets to the upper section, some damage, notably around the edge and staining, 61 x 45cm, period frame, glazed

Bergougnan Tyres dates back to 1921 when the Belgian owned company started making industrial pneumatics, tyres for bicycles and other items.

(1)

£100 - £150



Lot 270



271\* **Biais (Maurice, 1872-1926).** Motoracing 1902, colour print on paper, showing a racing car on track with trees and green landscape, printed signature lower left and dated 1902, printed by Imp. J. Minot. 34. R. Des Martyrs. Paris. lower right, 46 x 66cm, period oak frame, glazed, together with two colour prints, titled 'Une Entree Sensationelle' and 'La Carte Forcee' by Albert Beerts, both framed and glazed

(3)

£100 - £150

272\* **Birmingham Small Arms.** An original B.S.A. Motor Bicycles c.1900, printed by White & Pike Ltd, Birmingham, quarter creases, 25cm high x 73cm wide, period art nouveau green and gilt frame, glazed

White & Pike Ltd were printers based at Longbridge, Birmingham. They ceased trading in 1901 and their premises were bought by Herbert Austin in 1906 for his motor vehicle business.

(1)

£300 - £500





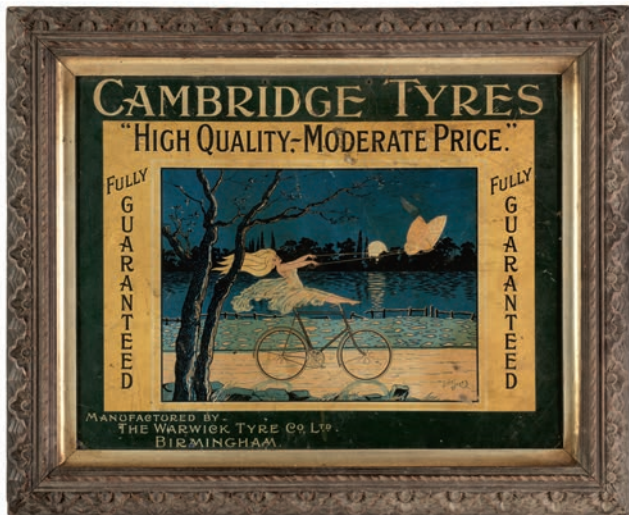
273\* **Boyce Motometer.** A Boyce Motometer manufactured and sold by The Benjamin Electric Ltd, London c.1913, the gauge with glass on both sides, mounted on brass wings with threaded screw, in good original condition, 13cm long  
(1)

£100 - £150



274\* **Boyce Motometer.** A winged temperature meter c.1915, the gauge with glass front and back, black and gold panel the front, gold panel the back, with patent marks for Mar 17-14 July 16-18, Aug 13-18, mounted on a brass eagle with played wings and threaded rod, 14cm long with original trade label  
(1)

£100 - £150



Lot 275

275\* **Cambridge Tyres.** A Cambridge Tyres advertising board c.1915 printed by Robert Park & Co, London, colour lithograph on card, artwork by Lionel Hayes, two eyelets to the upper section, some scuffs and scratches, 38 x 49.5cm, period carved wood frame, glazed  
(1)

£150 - £200



276\* **Commercial Motor Transport Exhibition.** A 1920s colour lithographic poster, printed on paper by Hill Sifken London, the artwork by Harry Whincap, some creases, 94 x 57cm, period oak frame, glazed  
(1)

£200 - £300





Lot 277

277\* **Cycling.** A large Cycle Maker shop sign c.1930s, mirrored gold lettering with red edges, on a black ground, very poor condition, period gilt frame glazed, frame size 53cm high x 200cm wide  
(1) £100 - £200

278\* **Cycling.** A Raleigh bicycles advertising poster c.1930s, lithograph on paper laid on card, designed by F.H. Bell, fold creases 48 x 36cm, period oak frame, glazed  
(1) £100 - £150



279\* **Cycling.** A Royal Enfield "Made Like A Gun" Bicycles advertising board, c.1900, colour lithograph on card, two eyelets to the upper section, some scratches and creases, 57 x 43cm, period oak frame  
Royal Enfield's trademark "Made Like A Gun" first appeared in 1893  
(1) £100 - £150

280\* **Cycling.** An original Rudge-Whitworth Cycles advertising poster c.1920, colour lithograph on paper printed by James Upton Ltd, Birmingham & London, fold creases, 47 x 48cm, period carved oak frame, glazed  
(1) £100 - £150

281\* **Cycling.** An original French advertising poster for Brampton c.1910, showing pedals and chains, colour lithograph on card, 58 x 38cm, period oak frame, glazed  
(1) £70 - £100



Lot 281



282\* **Cycling.** An Edwardian advertising poster c.1905, Ride "Vinco" Cycles, showing Lord Kitchener and the innkeepers child, colour lithograph on paper laid on card, printed by Maclure, McDonald & Co, Glasgow, some staining, loose in frame, 63.5 x 46cm, period frame, glazed  
(1) £70 - £100

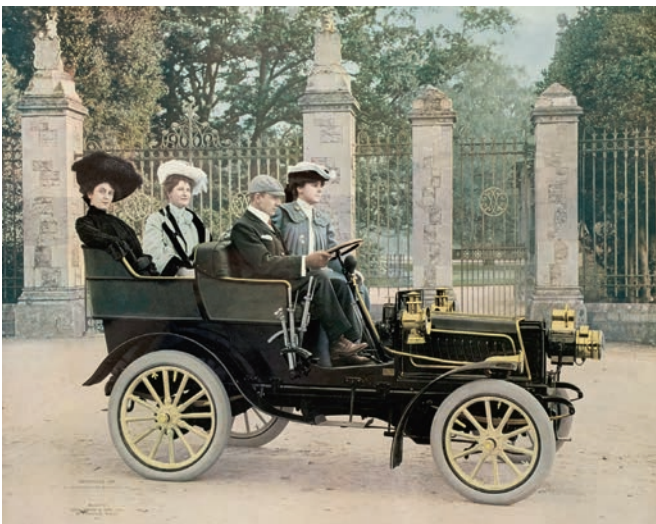




283\* **Daimler.** H.M. The King's Daimler Car Fitted with Seven Inch Palmer Cord Tyres c.1915, a large carbon print photograph, 64 x 82cm, mount aperture, period oak frame, glazed  
(1) £200 - £300



Lot 285



284\* **Decauville.** A colour print of a Decauville Car, printed lower left 'Decauville Car by Kind Permission of the Motor Car Co Ltd, Blocks by John Swain & Son Ltd, 56 Farringdon Street E.C.', 43 x 53cm, laid on card, period oak frame, glazed, together with an identical print, period carved rosewood effect frame

The factory was established by Paul Decauville in 1897 and started producing motorcars and the company produced automobiles from 1898 and ceased production of motorcars in 1911.

(2) £100 - £150

285\* **Dunlop.** A Dunlop Motor Cycle Belts advertising board c.1920, colour lithograph on card, two eyelits to the upper edge, some creases and staining, 49 x 37cm, period oak frame, glazed  
(1) £100 - £150



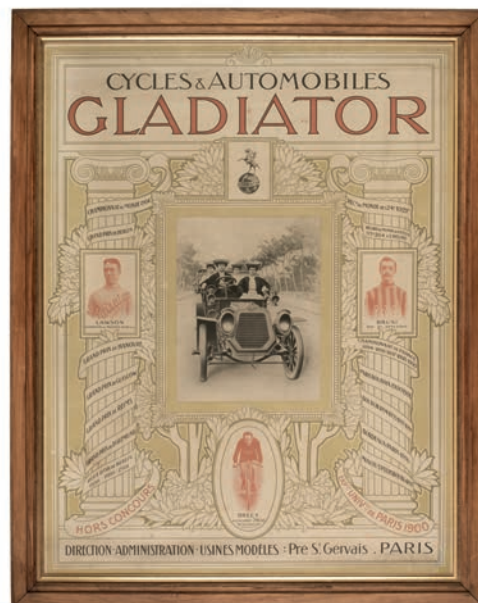
286\* **Early Motoring.** A veteran car window blind c.1900, the silk blind with weighted fixing bracket and tassles, 63cm long x 33cm drop, together with veteran car seat (heavily rusted), two Dunlop double acting foot pumps, a motoring Brexton picnic set in a wicker basket c.1950 and other items

(13) £100 - £200

287\* **Exide Batteries.** An original show card for Exide The Long Life Battery c.1950, "Needs No Handle to its Name", colour lithograph on card, some loss notably to the i of Exide, 82 x 52cm, mount aperture, modern pine frame, glazed, inscribed verso 'has folding stand on the back'  
(1) £200 - £300



288\* **Flying Jacket.** A modern WWII Irvin style brown leather flying jacket, with large pockets, cuffs straps and sheepskin lining, 65cm shoulder to bottom, inner arms 45cm together with a suede jacket with YKK zips and soft wool lining  
(2) £150 - £200



290\* **Gladiator.** An original Gladiator Cycle & Automobiles Poster c.1904, monochrome and red lithograph on paper, creases, spotting and restoration lower right, 76.5 x 59cm, framed and glazed  
(1) £150 - £200



289\* **French Grand Prix.** An original 1924 French Grand Prix poster, monochrome on paper, printed R.C. Seine 78.412 - Imprimerie Tournet Paris 8.24 lower right, upper section with vertical crease, close tear upper right, some discolouration notably to the corners, 78 x 59cm, mount aperture, framed and glazed  
The 1924 French Grand Prix (XVIII Grand Prix de l'A.C.F.) was held at Lyon on 3 August 1924. The race took place over 35 laps with a total of 503.37 miles. The fastest lap was completed by British driver Henry Segrave in his Sunbeam, but the winner was the Italian Giuseppe Campari in his Alfa Romeo, closely followed by two Frenchmen both driving a Delage.  
(1) £150 - £200



291\* **Goodrich Motor Tires.** An original Goodrich Company poster c.1910, colour lithograph on paper, showing a portrait of Marie by Albert Lynch, with copyright 1909 by the B.F. Goodrich Co, Akron, O, U.S.A., vertical closed tear upper right, 77 x 67cm, period carved oak frame, glazed  
Marie was one of the 17 "Goodrich Girls". The Goodrich Girl series was given to customers as Christmas promotional gifts in various forms including advertisements, calendars, postcards and other items.  
(1) £200 - £300





292\* **Goodrich Tyres.** A Goodrich Safety Tread advertising board c.1920, colour lithograph on card, crease on left handside, some staining and general wear, 56 x 42cm, card mount aperture, period oak frame, glazed

(1)

£150 - £200

293\* **Great Western Railway.** A reproduction cast iron GWR badge, with gold painted lettering on black, 31 x 28cm, together with a Railwayman's goliath pocket watch by Goldsmith's & Silversmiths Company Ltd, 112 Regent Street, London, with white enamel dial, black roman numerals and blued steel hands, subsidiary seconds dial, the nickel case enclosing Swiss movement, 7.5cm diameter on a solid silver watch chain and other items

(5)

£70 - £100



294\* **Great Western Railway.** A GWR circular fusee wall clock, the 25cm diameter cream painted dial with black roman numerals and GWR logo, in a period mahogany case, the back stamped EQ20 285 No8, with brass fusee movement, case size 33cm diameter, with winding key and pendulum

(1)

£300 - £500

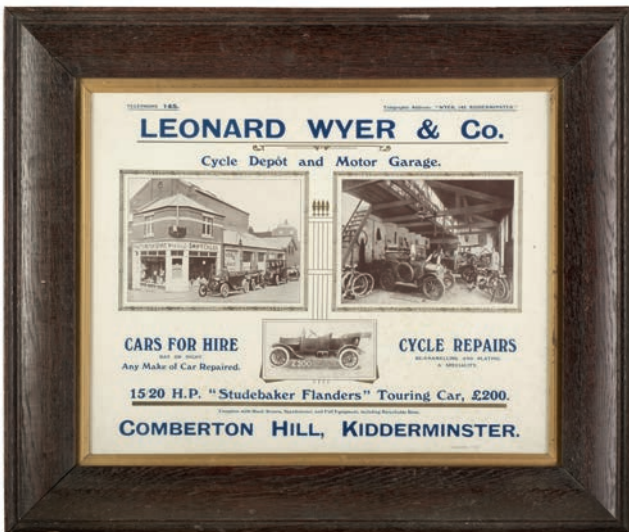


Lot 295

295\* **Gutta Percha.** A 1930s Gutta Percha Tires enamel sign, with white and black block lettering on a red ground with a roundel of 'Perky' the terrier, some damage and rust, 41.5 x 199.5cm  
The Canadian firm Gutta Percha & Rubber Limited was established in 1883, the factory and headquarters was located in Toronto, Ontario, Canada  
(1) £500 - £800



296\* **His Master's Voice.** An original HMV enamel sign, showing Nipper by a gramophone with the logo "His Master's Voice" beneath, predominantly yellow and black enamel, holes to each corner for wall fixing, some loss enamel notably to the edge and the rear side retaining most enamel, 45.5 x 60.5cm  
(1) £300 - £500



297\* **Leonard Wyer & Co.** An advertising poster c.1915, monochrome and blue lithograph on paper, showing the shop and workshop at Comberton Hill, Kidderminster, 37 x 46cm, period oak frame, glazed  
(1) £70 - £100



298\* **Lincolnshire Motor Co Ltd.** An advertising poster c.1920, colour lithograph, minor damage notably to upper right corner, 39 x 49cm, period carved and giltwood frame, glazed  
(1) £100 - £150



299\* **Mercedes.** A modern brass model of a vintage Mercedes, stamped 'Mercedes G.P. Car 15/100 1985 Chris ...', mounted on a wooden base, 25cm long  
(1) £70 - £100

300\* **Model Aircraft.** A collection of large scale model aircraft, including an American biplane, green fabric fuselage and wings, aircraft identity markings for EF-1, 119cm wingspan x 134 nose to tail, together with another American biplane and other models  
(5) £100 - £200

301\* **Model Aircraft.** A large scale model of the Red Baron's Fokker triplane, 141cm wingspan x 104cm nose to tail, together with another similar 121cm x 94cm nose to tail  
(2) £70 - £100

302\* **Model Cars.** A collection of early model cars, including a scratch-built wooden motorcar c.1920, painted in blue with aluminium radiator grille and four composite wheels, 49cm long, together with a Tria-and tinplate tow truck and winch 42cm long, scratch built tinplate locomotive 51cm long and other items  
(9) £70 - £100





Lot 303

**303 Motor Aneroid.** A 1920s dashboard barometer by J.W. Ray & Co, Liverpool, the silvered dial compensated for temperature, with rotating dial for adjusting temperature to falling or rising, in a circular aluminum case with dashboard mounting screw holes, 11.5cm diameter  
(1) £70 - £100



Lot 305

**306\* Motoring Jackets.** A modern brown leather bomber jacket, with tailors label for Targa, size Large, the lining printed with a map of Northern Europe, together with 3 other leather coats all formerly used for motoring  
(4) £70 - £100



**304\* Motor Insurance.** Accident Insurance Coy Ltd poster c.1920, colour lithograph laid on card, some staining and scuffs, 61.5 x 49cm, period carved oak frame, glazed  
(1) £100 - £150

**305\* Motoring Apparel.** A 1930s Dunhill red leather motoring/flying helmet, fur lining with original tailors label together with a 1930s brown soft leather motoring/flying helmet, black fur lining, pop stud ear flaps, and chin strap, two white leather motoring/flying helmets plus 3 pairs of fur drivers gauntlet gloves and 2 pairs of folding goggles including a pair with amber glass lenses  
(9) £200 - £300



Lot 307

307\* **Motoring Overcoat.** A 1930s soft brown leather overcoat, with 6 composite buttons to the front, large pockets and waistbelt, soft wool lining, in generally good condition, approximately 120cm drop, inner arm 46cm, together with a similar brown leather overcoat in very worn condition

(2)

£100 - £150



308\* **Motoring Photographs.** A collection of early to mid 20th century monochrome photographs, large format including a Morris Minor, 50 x 60cm, laid on card, motorcycles, bicycles all unframed with the exception of 4

(34)

£200 - £300

309\* **Nevil (Andre, 20th century).** Motor racing 1905, colour pochoir lithograph on paper, printed by Pour L'Estampe Sportive Artistique, signed in pencil by the artist lower left, 42 x 71.5cm, gilt painted carved wood frame, glazed, together with another by the same artist showing horse and cart bolting as a racing car passes by, signed in pencil lower left, 43 x 72cm, gilt painted carved wood frame, glazed

(2)

£300 - £500

310\* **New-Hudson Motorcycles.** An advertising poster c.1915, colour lithograph on paper, printed B.P.52 lower left, some creasing and closed tears, 74 x 47cm, period carved oak frame, glazed

New-Hudson Motorcycles was established in 1903 by George Patterson in Birmingham. They expanded between 1910 and 1915 using JAP engines before the factory joined the war effort until 1919. In 1927 Bert le Vack broke the 100 miles per hour record at Brooklands on a 500 cc New-Hudson. The firm stopped motorcycle production in 1932 and changed its name to Girling Ltd.

(1)

£200 - £300

311\* **Orel.** An original "Orel" Argenteuil S & O Automobiles poster by Walter Thor (1870-1929), colour lithograph on card, light creases, 45.5 x 63cm, period maple frame (modern backing board), glazed

(1)

£200 - £300



Lot 310



Lot 311





Lot 312

**312\* Pedal Car.** A 1930s child's pedal car representing a Miller racing car, probably American, in racing green, lacking radiator grille but with a brass shield badge bearing the initials HS, an additional number 98 painted on the rear, red painted seat and a gear lever to the side, steering wheel bound in tape, remains of four rubber tyres, in "barn find" condition, heavily rusted and in need of restoration, approximately 120cm long  
(1) £200 - £300



Lot 314

**313\* Pedal Car.** A 1930s child's pedal car in the form of a racing car, with cream painted bodywork, traces of red decals to the rear, the grille detached, lacking front wheels and in very poor "barn find" condition, approximately 111cm long  
(1) £70 - £100



Lot 315

**314\* Pedal Car.** A 1960s pedal car in the Veteran style, probably Triang, green painted bodywork with licence plate BJ 424, one plastic side lamp, leatherette / plastic upholstered seat, four wheels each with Lines Bros Ltd rubber tyres, in "barn find" condition, heavily rusted and in need of restoration, approximately 89cm long  
(1) £100 - £150



Lot 316

**315\* Pedal Car.** A child's Veteran open-top child's pedal car c.1910, wooden construction painted in light blue, the radiator grille with licence plate for YU 78, pair of headlamps, rubber pedals and with two steering wheels each with column (possibly not related), four wheels, two black and two white tyres, in "barn find" condition and in need of restoration, approximately 115cm long  
(1) £200 - £300

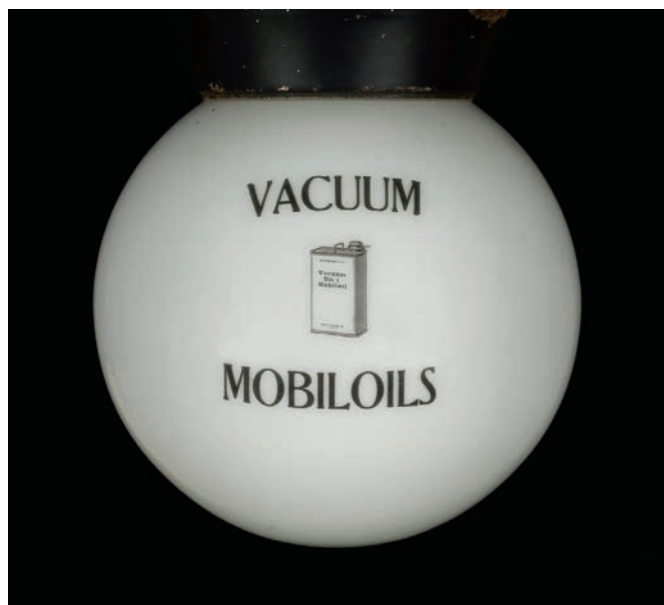
**316\* Pedal Car.** A modern child's open-top pedal car in the vintage style, red bodywork with racing number 1 in white with chequered decoration, the grille with oval 'Classic' badge, black leatherette upholstered seat, brown steering wheel and printed dashboard instruments, four wheels each with black rubber tyres and a spare to the rear, some rust spots, scratches and scrapes but overall condition is good, approximately 93cm long  
(1) £200 - £300

317\* **Petrol Cans.** A collection of vintage petrol cans comprising, Shell, GPO, Shell Motor Spirit with Esso brass cap, Shell Aviation Spirit with Shell brass cap, another repainted recently with Shell cap, Shell with BP cap, Pratts, all in poor condition  
(7) £70 - £100



318\* **Petrol Cans.** A collection of vintage petrol cans comprising, Shell Motor Spirit with Shell brass cap, BP Motor Spirit with BP cap, SM & BP Ltd, Shell with Shell cap, Pratts Perfection Spirit with Pratts cap and two unidentified cans, all in poor condition  
(7) £70 - £100

319\* **Petrol Cans.** A collection of vintage petrol cans comprising, Pratts with brass Shell cap (2), Pratts Perfection Spirit with Pratts cap and 3 unidentified cans  
(6) £70 - £100



320\* **Petrol Pump Globe.** A vintage Vacuum Mobiloils glass globe, the milk glass globe with labels applied with black block lettering showing a petrol can labelled Vacuum No.1 Mobiloil, the opposite side with label printed 'Vacuum Oil Co., Ltd., Norfolk St., London, W.C.', on an black painted metal stand, approximately 18cm across and 23cm high  
(1) £200 - £300



321\* **Petrol Pump Globes.** A vintage glass petrol pump globe for Swan Bulbs, the milk glass globe with printed black block lettering and sun motif, the threaded neck maked '11 A', approximately 25cm across and 26cm high, together with a larger petrol pump globe, lacking any markings  
(2) £200 - £300



322\* **Petrol Pump.** A late 20th century display model of a petrol pump, the wooden base painted green and white with price per gallon indicator, the top with a milk glass pump globe, approximately 110cm high  
(1) £100 - £200





323\* **Pratts.** A pack of Pratt's Perfection Spirit playing cards, The Golden Pump or The Green Can, complete with original two part card box, together with another pack of card (complete) in green two part box with lithographic paper label showing a biplane, pratts petrol can and motorcar, a similar set (complete) box tatty and worn plus a Triumph Road Map c.1910, with 7 maps lacking number 1 plus a box of Pratt's Poultry Regulator c.1920s, unopened, 20.5cm high

(4)

£70 - £100

324\* **Pratts.** A large wooden sign c.1930, painted 'Ornan Garage Pratt's Cars for Hire' white and black lettering on an orange ground, inscribed 'Clayton 62 Chalk Farm Rd. N.W.I.' lower right, 76 x 123cm

(1)

£200 - £300



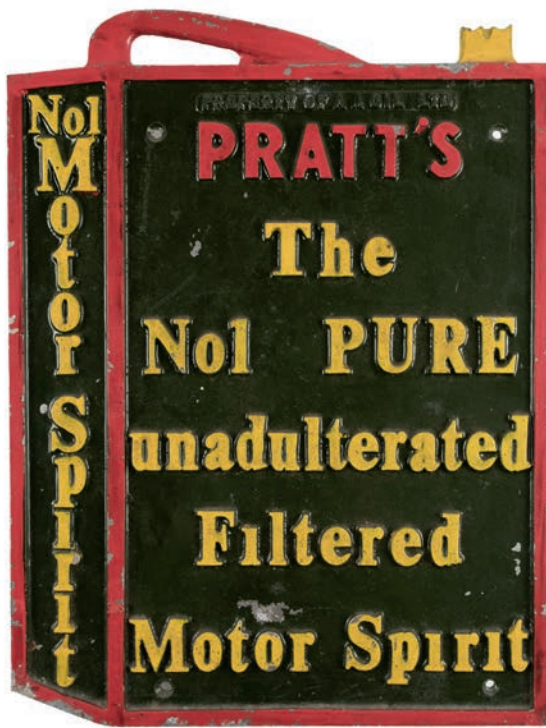
325\* **Pratts.** A Pratt's aluminium advertising sign, black lettering 'Use Only Pratt's The Best' on a yellow and green ground, 56 x 56cm, together with Pratt's Motor Oil Grades and Prices list, aluminium lithograph, 75 x 52cm and other signs including art nouveau Schweppes Table Waters tin sign, triptych form with a female nude in classical drapery pouring water from an urn, 55 x 56cm and other items

(8)

£100 - £150



Lot 324



326\* **Pratts.** A Pratt's cast metal sign in the form on a petrol can, polychrome painted in green, yellow and red, 47 x 35cm  
(1) £100 - £150



327\* **Pratts.** An original Pratt's single sided enamel sign, with black and red lettering on a yellow ground, holes to each corner for suspension, loss of enamel notably around the edge, 60.5cm high x 91cm wide  
(1) £200 - £300



328\* **Pratts.** An original Pratt's double sided enamel sign, produced by Franco Signs, 25 Oxford Street, W.1., additional stamped B.U./U.H.?, black and red lettering on a yellow ground, with angled brack for wall fixing, some wear notably around the edge, 45.5cm high x 53.5cm wide  
(1) £200 - £300



329\* **Pratts.** An original Pratt's Motor Spirits double sided sign, produced for Anglo-American Oil Co Ltd, black and white lettering on a yellow ground, some loss of enamel notably to the edge and does effect some of the lettering, with angled integral bracket for suspension, 46cm high x 54cm wide  
(1) £200 - £300





330\* **Pratts.** A Pratt's High Test Ethyl desk lamp, with milk glass globe shade applied with an sticker of a girl wearing an Ethyl hat, the lacquered brass base with shaped glass infilled in red Pratt's, blue spherical bead and another piece of glass infilled High Test, the base with switch, unwired and therefore not working  
(1) £100 - £150

331\* **Pratts.** A Pratt's Perfection advertising board c.1915, colour lithograph on card, 46 x 36cm, period oak frame, glazed  
(1) £100 - £150



332\* **Pratts.** A rare and original Pratt's Perfection Spirit advertising mirror, with gold and black block lettering, green petrol can and royal coat of arms lower left, some loss of silver, period oak frame, 67 x 51.5cm  
(1) £700 - £1,000

333\* **Pratts.** A rare and original Pratt's Perfection advertising mirror, the oval bevel edge glass mirror with gold and black block lettering, green petrol can and royal coat of arms, some loss of silver, 46 x 58.5cm  
(1) £500 - £800



Lot 333



Lot 334

334\* **Pratts.** An original Pratt's Perfection Spirit enamel sign, produced by the Imperial Enamel Co. Ltd Birmingham for Anglo-American Oil Co Ltd, black and red font on a yellow ground, with 20 holes for wall fixing, some damage to the enamel notably around the edge, 46.5cm high x 132cm wide

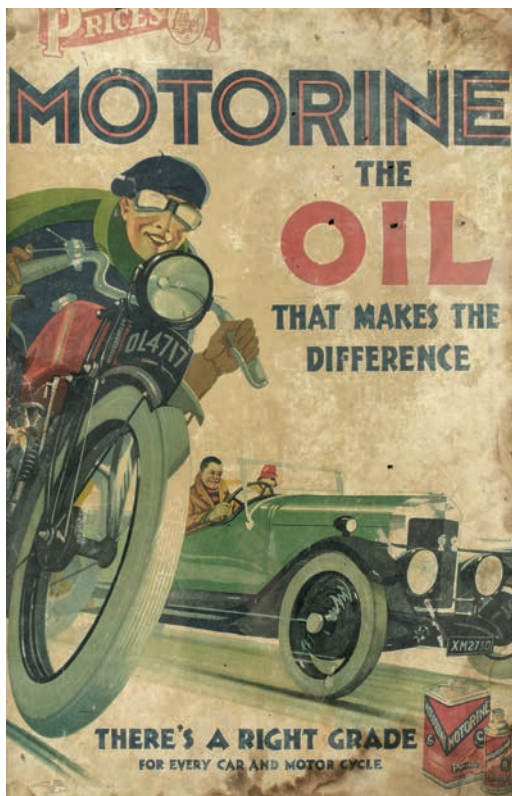
(1)

£300 - £500

336\* **Repair Garage.** A toy garage c.1930, of wooden construction with main office, 11 storage units each with hinged door and large forecourt, embellished with owners sign for The Circle Garage, proprietor H. Crighton, and with Pratts, Castrol and Shell advertising signs, approximately 25cm high 76cm wide x 50.5cm deep, together with another toy garage but later

(2)

£100 - £200



335\* **Prices.** A Prices Motorine Oil advertising board c.1930, colour lithograph on card with 2 eyelets to the upper edge, poor condition, 75 x 49cm, period oak frame, glazed together with J Sanders maker of the noted Royal Seven Cycles and Motor Cycles, colour lithograph advert c. 1910, 49 x 33cm, mount aperture, period maple frame, glazed and other related framed pieces

(7)

£100 - £150



337\* **Royal Automobile Club.** A 1950s enamel double sided sign for RAC Get-You-Home Service, some rusting notably around the edge, 69cm high x 56cm wide, with original wrought iron bracket

(1)

£300 - £500





338\* **Royal Automobile Club.** A 1920s RAC car badge by Elkington & Co, enamelled union jack centre beneath a kings crown and winged mercury, the reverse with a profile of Edward VII, base stamped Elkington & Co Ld, numbered D9157, 14cm high presented on a modern trophy base, together with a RAC Civil Service car badge c.1930s plus a Vintage Sports Car Club radiator bar badge (3) £100 - £200



339 **Royal Mail.** A George VI postal service circular wall clock c.1939, the 30.5cm diameter cream dial with black roman numerals and G.V.I.R. cypher, in a period mahogany case, the back stamped SM & Co 1939 GR VI, with brass fusee movement stamped 11984 SM & Co 1939 GRVI with crown beneath, case size 38cm diameter with key and pendulum (1) £200 - £300



340\* **Sacony Oils.** A reproduction American Sacony Aircraft Oils advertising sign, white and red block lettering on a blue ground with an image of a monoplane, 30.5 x 46cm (1) £70 - £100



341\* **Shell.** A reproduction Shell Sealed Pump enamel sign, in the form of a petrol pump with black and white lettering on a red ground, 71 x 31cm

(1)

£100 - £200

342 **The Midland Rubber Co Ltd.** A British Britannic and Midland Tyres poster c.1910, colour lithograph on card, two eyelets to the upper edge, noticeable scratch upper left, staining and some scuffing, 58 x 45cm, period oak frame, glazed

(1)

£150 - £200



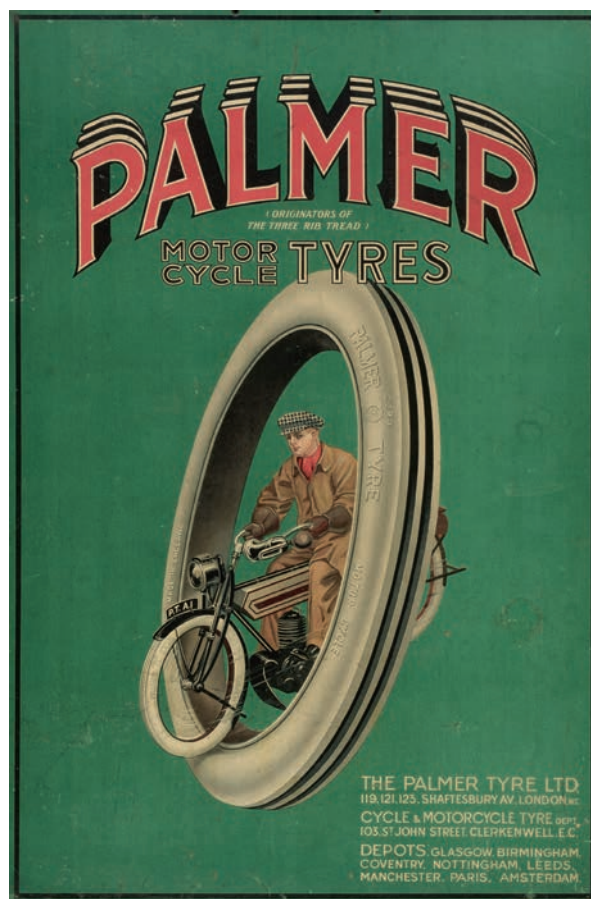
Lot 342

343\* **The Palmer Tyre Ltd.** A Palmer Motor Cycle Tyres advertising poster c.1915, colour lithograph on card, two eyelets to the upper section, 75 x 50cm, framed and glazed

Palmer Cord Tyres was established in 1895, and in 1914 Rene Thomas won the Indianapolis 500 in his Delage fitted with Palmer Cord tyres.

(1)

£200 - £300



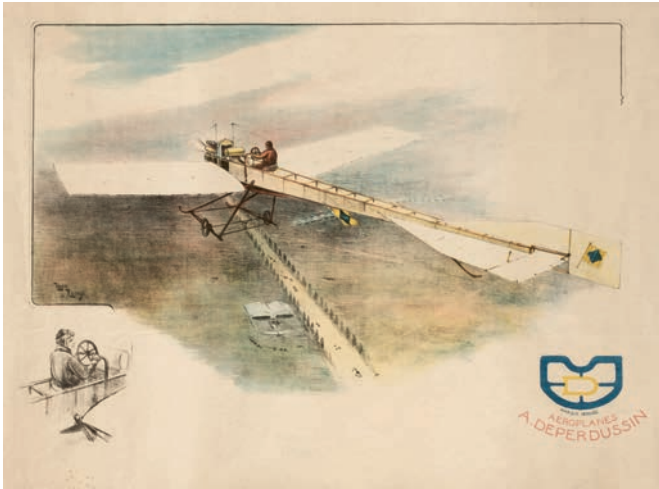
Lot 343

344\* **Tinplate Toys.** A Mamod Steam Roller incomplete, in original card box (box poor condition), together with a tinplate Streamline Speedway game by Louis Marx & Co, with 3 clockwork racing cars and track, the box in poor condition, a boxed Ford model T 1912 by Radio, a tinplate Boil Over Car and other items

(8)

£100 - £200





**345\* Transport Ephemera.** A large collection of advertising and transport ephemera, including a *Aeroplanes A. Deperdussin 1919*, colour print by Henri Edmund Rudaux (1870-1927) showing a pioneer aircraft in flight, with a similar remark lower left, 55 x 76cm, a *Rowntree's Motoring Chocolate board* designed by Alfred Leete c.1930, 39.5cm long plus *Bicyclette Clement* monochrome board c.1905 and other items, condition generally poor throughout  
(3 cartons) £100 - £200

**346\* Tricycle.** An Edwardian steel framed child's tricycle, with two cogs and chain, two pedals, remains of seat and handlebars, with eight-spoke wheel at the front and two larger wheels to the rear, in "barn find" condition, approximately 90cm long together with a *Coventry Eagle* child's ordinary / penny farthing, with badge applied to the front, red painted finish, Club No.2 leather saddle, white rubber tyres, in poor condition, approximately 93cm high plus two 1950/ 60s *Triang* child's scooters  
(4) £70 - £100

**347\* Tyres.** A set of 4 *Firestone* gum dipped tyres - Model A Ford, each numbered 4.40/4.50-21, 78cm diameter together with a smaller tyre, 65cm diameter  
(5) £100 - £200

**348\* Vanner & Prest.** An American advertising clock for Vanner & Prest's "Molliscorium", the drop dial wall clock with pine and pressed metal case, 29cm diameter white dial with black roman numerals, makers mark B.U.C. Co, 79.5cm long, with pendulum, probably a later version of this late 19th century clock  
(1) £100 - £150

**349\* Warwick Tyres.** The Warwick Tyre Company Ltd advertising board c.1915, colour lithograph on card, printed by Automatic Photo-Printing Syndicate Ltd, Rickmansworth, some water marks, 60 x 43cm, period maple frame, glazed  
(1) £200 - £300



Lot 348



Lot 349

# MILITARY & AVIATION HISTORY, MEDALS & MILITARIA COLLECTIONS OF BARNES WALLIS & WINSTON CHURCHILL

THURSDAY 12 NOVEMBER 2020



The Field Officers' Gold Medal  
Posthumously Awarded to  
Lt-Col Charles Donellan,  
48th (Northamptonshire) Foot,  
Killed in Action at the  
Battle of Talavera 1809.

Estimate £15,000-20,000



The Indian Mutiny Medal awarded to  
Major Herbert Mackworth Clogstoun V.C.,  
19th Madras Native Infantry.

Estimate £3,000-5,000



An Exceptionally Fine and Rare American Officers' 1796 Pattern Light Cavalry Sword circa 1817.

Estimate £5,000-7,000

For further information please contact Henry Meadows:  
[henry@dominicwinter.co.uk](mailto:henry@dominicwinter.co.uk)  
01285 860006



## INFORMATION FOR BUYERS

### AFTER THE AUCTION

**Online Results:** If you weren't present or able to follow the auction live, you can find results for the sale on our website shortly after the sale has ended.

**Payment:** The price you pay is the amount at which the auctioneer's hammer falls (the hammer price), plus a buyer's premium (a percentage of the final hammer price) and vat where applicable. You will be issued with an invoice made out to the name and address provided on your registration form.

Please note successful bids made via live bidding cannot be invoiced or paid for until the day after an auction. A live bidding fee of **3% + VAT (Invaluable)** or **4.95% + VAT (the-saleroom)** will be added to your invoice.

### METHODS OF PAYMENT

**Cheque:** Cheques will only be accepted on the day of the sale by prior arrangement (please contact our office for further information). Cheques by post will be accepted but a period of 5 working days will be required for the cheque to clear before purchases can be collected or posted.

**Cash:** Payments can be made at the Cashier's Office, either during or after the sale.

**Debit Card:** There is no additional charge for purchases made with debit cards in the UK.

**Credit Cards:** We accept Visa and Mastercard. It is advisable to let your card provider know in advance if you are intending to purchase. This reduces the time needed to obtain authorisation when the payment is made.

**Bank Transfer:** All transfers must state the relevant invoice number. If transferring from a foreign currency, the amount we receive must be the total due after the currency conversion and the deduction of any bank charges.

**Note to Overseas Clients:** All payments must be made by bank transfer only. No card payments will be accepted unless by special prior arrangements with the auctioneers.

**Collection/Postage/Delivery:** If you attend the auction in person and are successful in your bid, you are free to collect your item once payment has been made.

Successful commission or live bids will be invoiced to you the day after the sale. When it is possible for our in-house packing department to send your purchase(s), a charge for postage/packing/insurance will be included in your invoice. Where it is not possible for our in-house packing department to send your item you will be required to make your own arrangements or to contact Mailboxes etc (tel: 01793 525009) or Pack and Send (tel: 01635 887237) who may be able to help.

We provide a monthly delivery service to Central London, usually on Wednesday of the week following an auction. Payment must be received before this option can be requested. A charge will be added to your invoice for this service.

### ARTIST'S RESALE RIGHT LAW ("DROIT DE SUITE")

Lots marked with **AR** next to the lot number may be subject to Droit de Suite.

Droit de Suite is payable on the hammer price of any artwork sold in the lifetime of the artist, or within 70 years of the artist's death. The buyer agrees to pay Dominic Winter Auctioneers Ltd. an amount equal to the resale royalty and we will pay such amount to the artist's collecting agent. Resale royalty applies where the Hammer price is 1,000 Euros or more and the amount cannot be more than 12,500 Euros per lot.

The amount is calculated as follows:

Royalty For the Portion of the Hammer Price (in Euros)

4.00% up to 50,000

3.00% between 50,000.01 and 200,000

1.00% between 200,000.01 and 350,000

0.50% between 350,000.01 and 500,000

Invoices will, as usual, be issued in Pounds Sterling. For the purposes of calculating the resale royalty the Pounds Sterling/Euro rate of exchange will be the European Central Bank reference rate on the day of the sale.

Please refer to the DACS website [www.dacs.org.uk](http://www.dacs.org.uk) and the Artists' Collecting Society website [www.artistscollectingsociety.org](http://www.artistscollectingsociety.org) for further details.

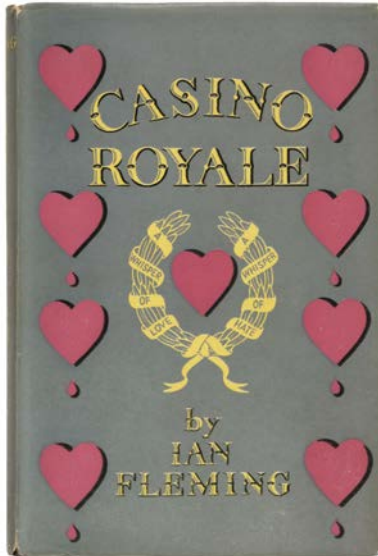
## CONDITIONS OF SALE AND BUSINESS

1. The Seller warrants to the Auctioneer and the buyer that he is the true owner or is properly authorised to sell the property by the true owner and is able to transfer good and marketable title to the property free from any third party claims.
2. (a) The highest bidder to be the buyer. If during the auction the Auctioneer considers that a dispute has arisen he has absolute authority to settle it or re-offer the lot. The Auctioneer may at his sole discretion determine the advance of bidding or refuse a bid, divide any lot, combine any two or more lots or withdraw any lot without prior notice.  
(b) Where goods are bought at auction by a buyer who has entered into an agreement with another or others that the other or others (or some of them) shall abstain from bidding for the goods and the buyer or other party or one of the other parties is a dealer (as defined in the Auction Biddings Agreement Act 1927) the buyer warrants that the goods are bought bona fide on joint account.
3. The buyer shall pay the price at which a lot is knocked down by the Auctioneer to the buyer ("the hammer price") together with a premium of 20% of the hammer price. Where the lot is marked by an asterisk the premium will be subject to VAT at 20% which under the Auctioneer's Margin Scheme will form part of the buyer's premium on our invoice and will not be separately identified (the premium added to the hammer price will hereafter collectively be referred to as "the total sum due"). By making any bid the buyer acknowledges that his attention has been drawn to the fact that on the sale of any lot the Auctioneer will receive from the seller commission at its usual rates in addition to the said premium of 20% and assents to the Auctioneer receiving the said commission.
4. (a) The buyer shall forthwith upon the purchase give in his name and permanent address and pay to the Auctioneer immediately after the conclusion of the auction the total sum due.  
(b) The buyer may be required to pay down during the course of the sale the whole or any part of the total sum due, and if he fails to do so after such request the lot or lots may at the Auctioneer's absolute discretion be put up again and resold immediately.  
(c) The buyer shall at his own expense take away any lot or lots purchased no later than five working days after the auction day.  
(d) The Auctioneer may at his own discretion agree credit terms with a buyer and extend the time limits for collection in special cases but otherwise payment shall be deemed to have been made only after the Auctioneer has received cash or a sterling banker's draft or the buyer's cheque has been cleared.
5. (a) If the buyer fails to pay for or take away any lot or lots pursuant to clause 4 or breaches any other condition of that clause the Auctioneer as agent for the seller shall be entitled after consultation with the seller to exercise one or other of the following rights:  
(i) Rescind the sale of that or any other lots sold to the buyer who defaults and re-sell the lot or lots whereupon the defaulting buyer shall pay to the Auctioneer any shortfall between the proceeds of that sale after deduction of costs of re-sale and the total sum due. Any surplus shall belong to the seller.  
(ii) Proceed for damages for breach of contract.  
(b) Without prejudice to the Auctioneer's rights hereunder if any lots or lots are not collected within five days or such longer period as the Auctioneer may have agreed otherwise, the Auctioneer may charge the buyer a storage charge of £1.00 + VAT at the current rate per lot per day.  
(c) Ownership of the lot purchased shall not pass to the buyer until he has paid to the Auctioneer the total sum due.
6. (a) The seller shall be entitled to place a reserve on any lot and the Auctioneer shall have the right to bid on behalf of the seller for any lot on which a reserve has been placed. A seller may not bid on any lot on which a reserve has been placed.  
(b) Where any lot fails to sell, the Auctioneer shall notify the seller accordingly. The seller shall make arrangements either to re-offer the lot for sale or to collect the lot and may be asked to pay a commission not exceeding 50% of the selling commission and any special expenses incurred in cataloguing the lot.  
(c) If such arrangements are not made within seven days of the notification the Auctioneer is empowered to sell the lot by auction or by private treaty at not less than the reserve price and to receive from the seller the normal selling commission and special expenses.
7. Any representation or statement by the Auctioneer in any catalogue, brochure or advertisement of forthcoming sales as to authorship, attribution, genuineness, origin, date, age, provenance, condition or estimated selling price is a statement of opinion only. Every person interested should exercise and rely on his own judgement as to such matters and neither the Auctioneer nor his servants or agents are responsible for the correctness of such opinions. No warranty whatsoever is given by the Auctioneer or the seller in respect of any lot and any express or implied warranties are hereby excluded.
8. (a) Notwithstanding any other terms of these conditions, if within fourteen days of the sale the Auctioneer has received from the buyer of any lot notice in writing that in his view the lot is a deliberate forgery and within fourteen days after such notification the buyer returns the same to the Auctioneer in the same condition as at the time of the sale and satisfies the Auctioneer that considered in the light of the entry in the catalogue the lot is a deliberate forgery then the sale of the lot will be rescinded and the purchase price of the same refunded. "A deliberate forgery" means a lot made with intention to deceive.  
(b) A buyer's claim under this condition shall be limited to any amount paid to the Auctioneer for the lot and for the purpose of this condition the buyer shall be the person to whom the original invoice was made out by the Auctioneer.
9. Lots may be removed during the sale after full settlement in accordance with 4(d) hereof.
10. All goods delivered to the Auctioneer's premises will be deemed to be delivered for sale by auction unless otherwise stated in writing and will be catalogued and sold at the Auctioneer's discretion and accepted by the Auctioneer subject to all these conditions. In the case of miscellaneous books, the Auctioneer reserves the right to extract and dispose of books that, in the opinion of the Auctioneer at his absolute discretion, have no saleable value and, therefore, might detract from the saleability of the rest of the lot and the Auctioneer shall incur no liability to the seller, in respect of the books disposed of. By delivering the goods to the Auctioneer for inclusion in his auction sales each seller acknowledges that he/she accepts and agrees to all the conditions.
11. (a) Unless otherwise instructed in writing all goods on the Auctioneer's premises and in their custody will be held insured against the risks of fire, burglary, water damage and accidental breakage or damage. The value of the goods so covered will be the hammer price, or in the case of unsold lots the lower estimate, or in the case of loss or damage prior to the sale that which the specialised staff of the Auctioneer shall in their absolute discretion estimate to be the auction value of such goods.  
(b) The Auctioneer shall not be responsible for damage to or the loss, theft, or destruction of any goods not so insured because of the owner's written instructions.
12. The Auctioneer shall remit the proceeds of the sale to the seller thirty days after the day of the auction provided that the Auctioneer has received the total sum due from the buyer. In all other cases the Auctioneer will remit the proceeds of the sale to the seller within seven days of the receipt by the Auctioneer of the total sum due. The Auctioneer will not be deemed to have received the total sum due until after any cheque delivered by the buyer has been cleared. In the event of the Auctioneer exercising his right to rescind the sale his obligation to the seller hereunder lapses.
13. In the case of the seller withdrawing instructions to the Auctioneer to sell any lot or lots, the Auctioneer may charge a fee of 12.5% of the Auctioneer's middle estimate of the auction price of the lot withdrawn together with Value Added Tax thereon and any expenses incurred in respect of the lot or lots.
14. The Auctioneer's current standard notices and information (i.e. Collation and Amendments) will apply to any contract with the Auctioneer as if incorporated herein.
15. These conditions shall be governed by and construed in accordance with English Law.

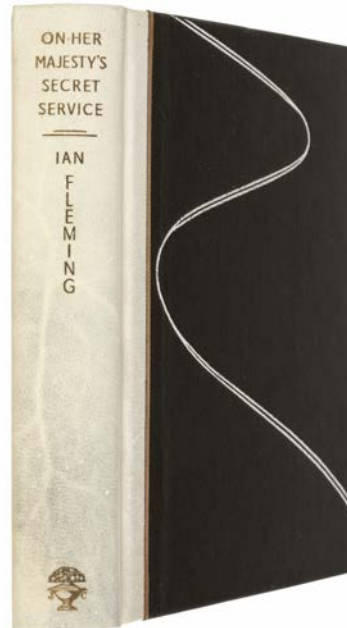


# MODERN LITERATURE, FIRST EDITIONS & AUTOGRAPHS CHILDREN'S, PRIVATE PRESS & ILLUSTRATED LITERATURE

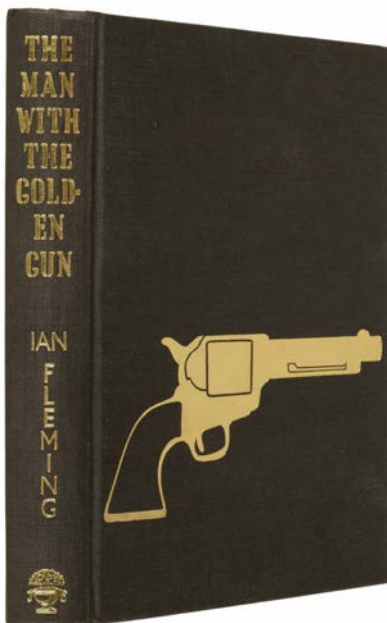
THURSDAY 17 DECEMBER 2020



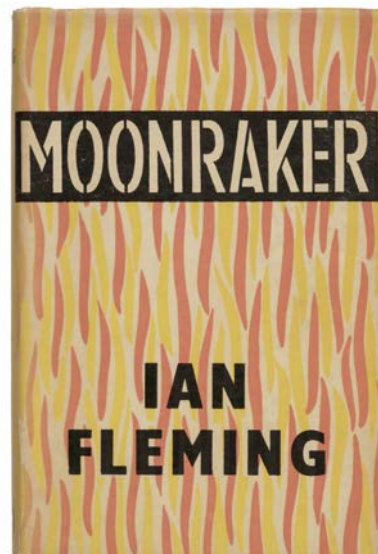
Ian Fleming, *Casino Royale*, 1st edition, 1st issue, 1953.  
Estimate £10,000-£15,000



Ian Fleming, *On Her Majesty's Secret Service*, limited signed issue, 1963.  
Estimate £5,000-£7,000



Ian Fleming, *The Man With The Golden Gun*, 1965, 1st issue binding with the Golden Gun design stamped to the front cover.  
Estimate £3,000-£5,000



Ian Fleming, *Moonraker*, 1st edition, 1955.  
Estimate £2,000-£3,000

For further information or to consign please contact:  
Paul Rasti paul@dominicwinter.co.uk  
Susanna Winters susanna@dominicwinter.co.uk  
01285 860006

